

Level Up!

New resources for on-demand data and Solutions

Dan Haag, Esri Regional Manager
Dr. Jill Saligoe-Simmel, Esri Sr. Product Manager

Evolving Spatial Data Infrastructures

Technology catching up with aspirations

Clearinghouse



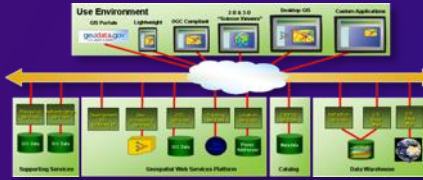
2000

GIS Portal

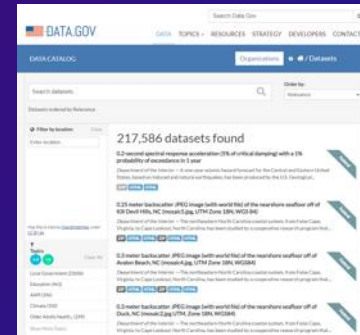


2005

Geospatial Platform



Open Data



2015

Geospatial Infrastructure



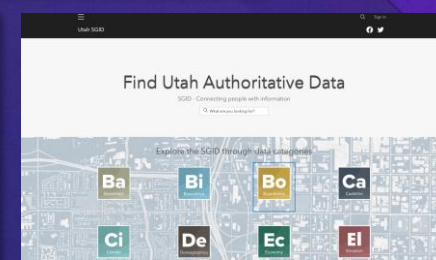
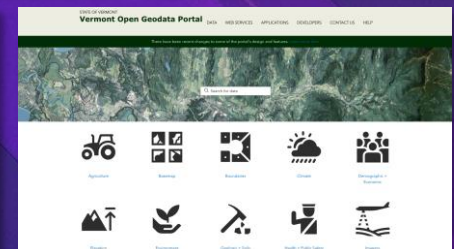
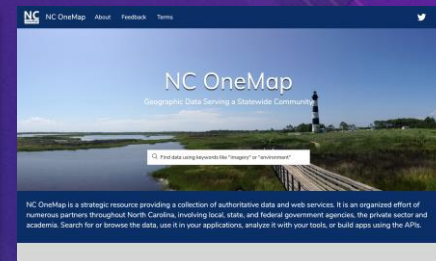
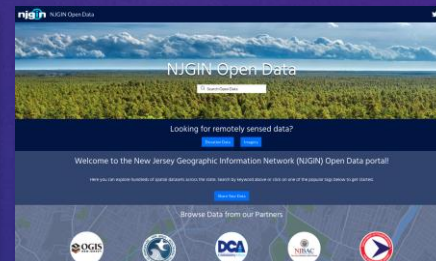
2020

ArcGIS makes sharing easier

State Collaborative Hubs

ArcGIS Hub has been much easier... and the functionality is much greater. We're really satisfied.

David Giordano, NC OneMap



Putting integrated data to use

These things cross borders...

Nature

People

Disasters

Economies

Infrastructure

...our data and solutions must cross borders, too.





Open data and PPPs

Public private partnerships making an impact

National Geospatial Data Assets (NGDA/A16)

ANNOUNCEMENTS

Esri Provides Open Access to Key Federal Geospatial Data

July 12, 2021

NGDA Datasets Will Now Be Widely Available for

REDLANDS, Calif.–July 12, 2021—Esri, the global leader in local government GIS, announced that in collaboration with federal agencies, it is opening up access to a core set of high-priority, high-demand national data layers, referred to by the federal government as National Geospatial Data Assets (NGDA). This development is critical for addressing key areas of national concern like infrastructure development and climate change.

The information being made available includes cartographic base maps, demographic data from the US Census Bureau; National Agriculture Inventory (NAIP) data from the US Department of Agriculture (USDA); and National Inventory of Dams (NID) database, managed by the US Army Corps of Engineers.

Esri Open Access National Datasets

Sharing critical National Geospatial Data Assets from the official sources

Simplified Access to Critical Data

Solving the nation's increasingly complex challenges requires a diverse community of data-driven experts. GIS and spatial data have proved foundational to analyzing, understanding, and communicating issues that range from epidemics to transportation infrastructure and the expanding climate crisis. U.S. government-developed data are often foundational input to tackling these challenges.

Working with the Federal Geographic Data Committee (FGDC) and federal agencies, Esri is improving access to a core set of dozens of high-priority, high-demand national geospatial data layers included in the National Geospatial Data Asset Portfolio (NGDA).

[Access the Collection](#)



Esri 10-Meter Land Cover

Esri 10-Meter Land Cover

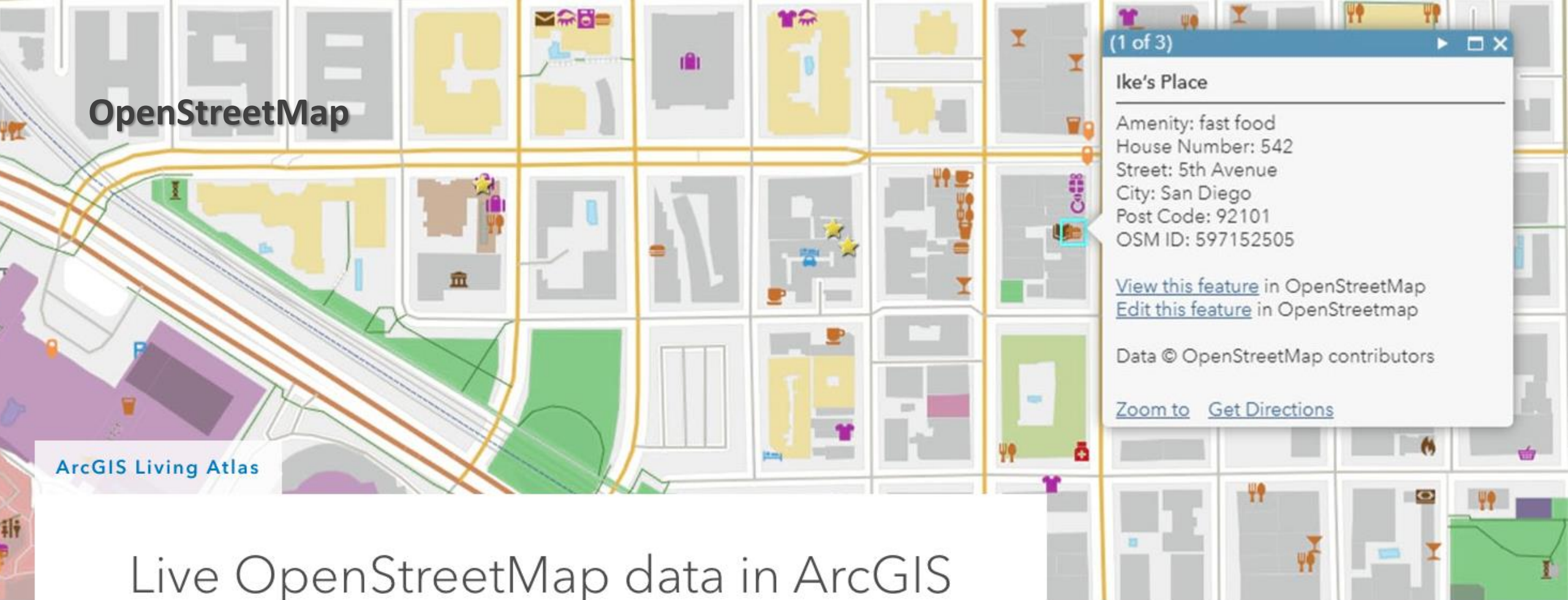
Land use changes rapidly. So should our maps.

Detailed. Timely. Accurate.

A 10-meter resolution map of Earth's land surface from 2020

High-resolution, open, accurate, comparable, and timely land cover maps are critical for decision-makers in many industry sectors and developing nations. These maps improve understanding of important topics such as food security, land use planning, hydrology modeling, and resource management planning. In addition, national government resource agencies use land cover as a basis for understanding trends in the country's natural capital, which helps define land planning priorities and is the basis of budget allocations.

<https://livingatlas.arcgis.com/landcover/>



Live OpenStreetMap data in ArcGIS

Mapping

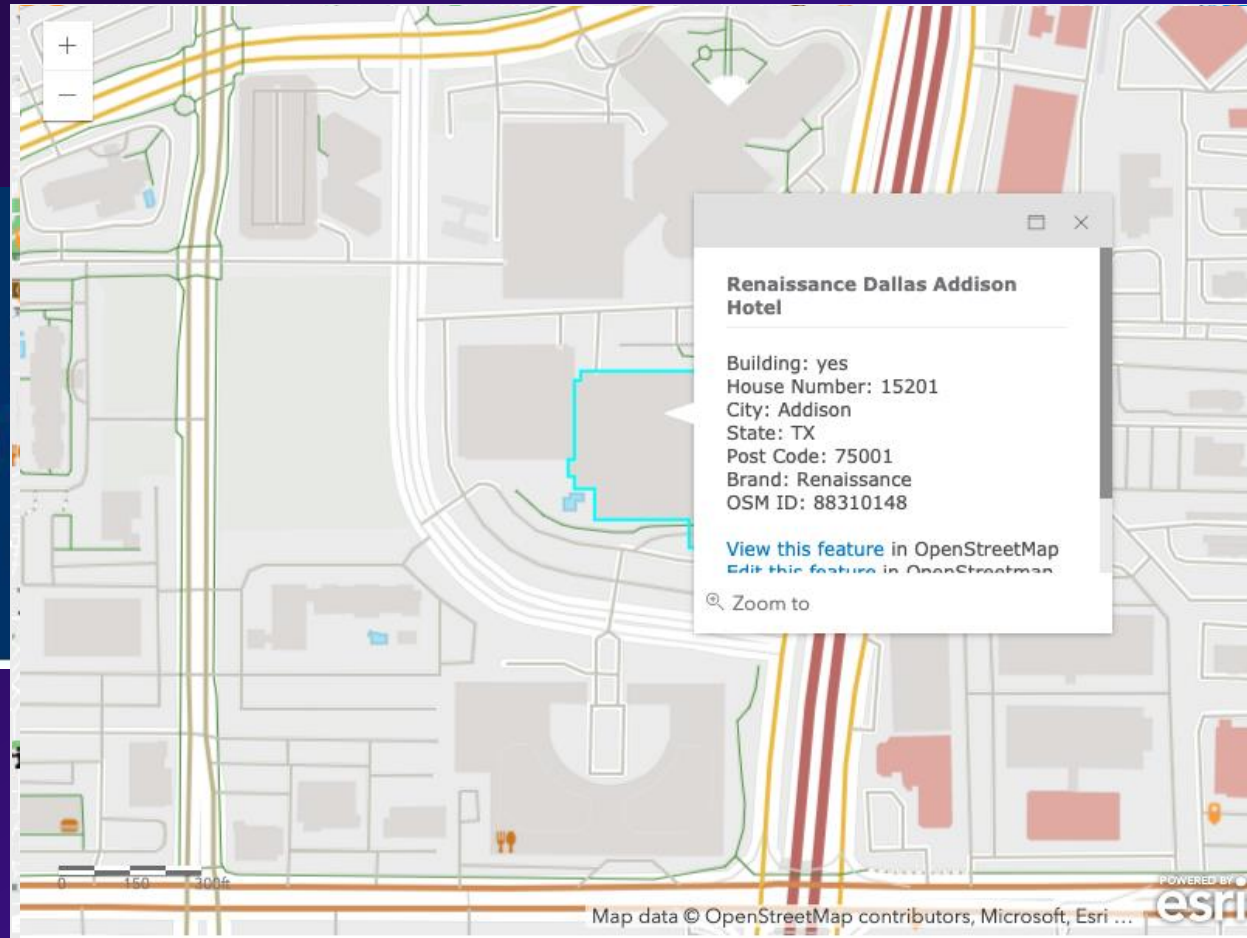
April 01, 2020



Deane Kensok

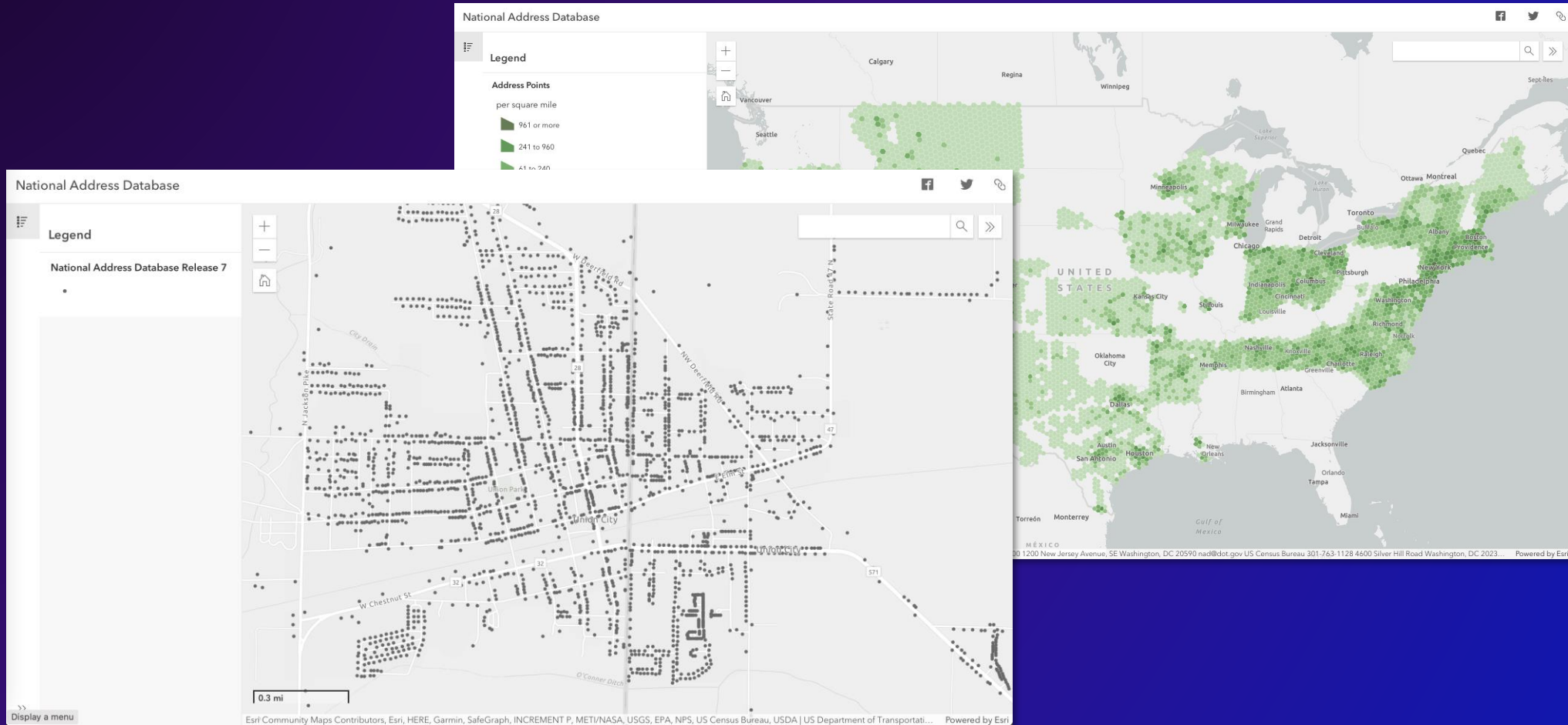
OpenStreetMap (OSM) is an **open, editable map of the world**. For several years, Esri has provided access to OSM data as a basemap. This started with Esri referencing raster tiles hosted by OpenStreetMap and has evolved to Esri generating and hosting vector tiles, which are updated every 3 weeks with the latest OSM data at the time. These basemaps are ideal for high-performance visualization but have limited capabilities beyond that.

OpenStreetMap



National Address Database (NAD)

A model partnership for enabling NGDA theme owners



<https://usdot.maps.arcgis.com/apps/instant/minimalist/index.html?appid=2c27531e71b94d48b1a4e12207e7f2c3>



ArcGIS Online

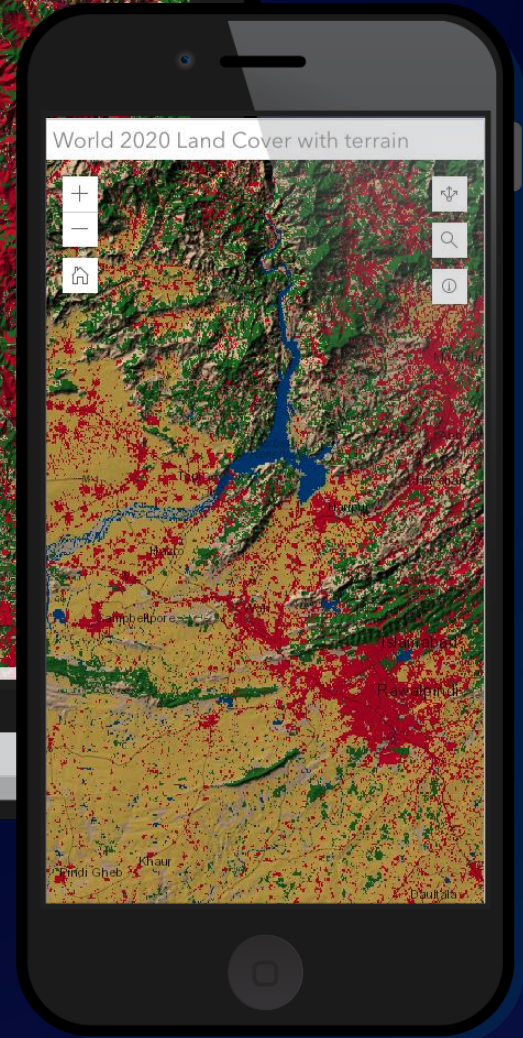
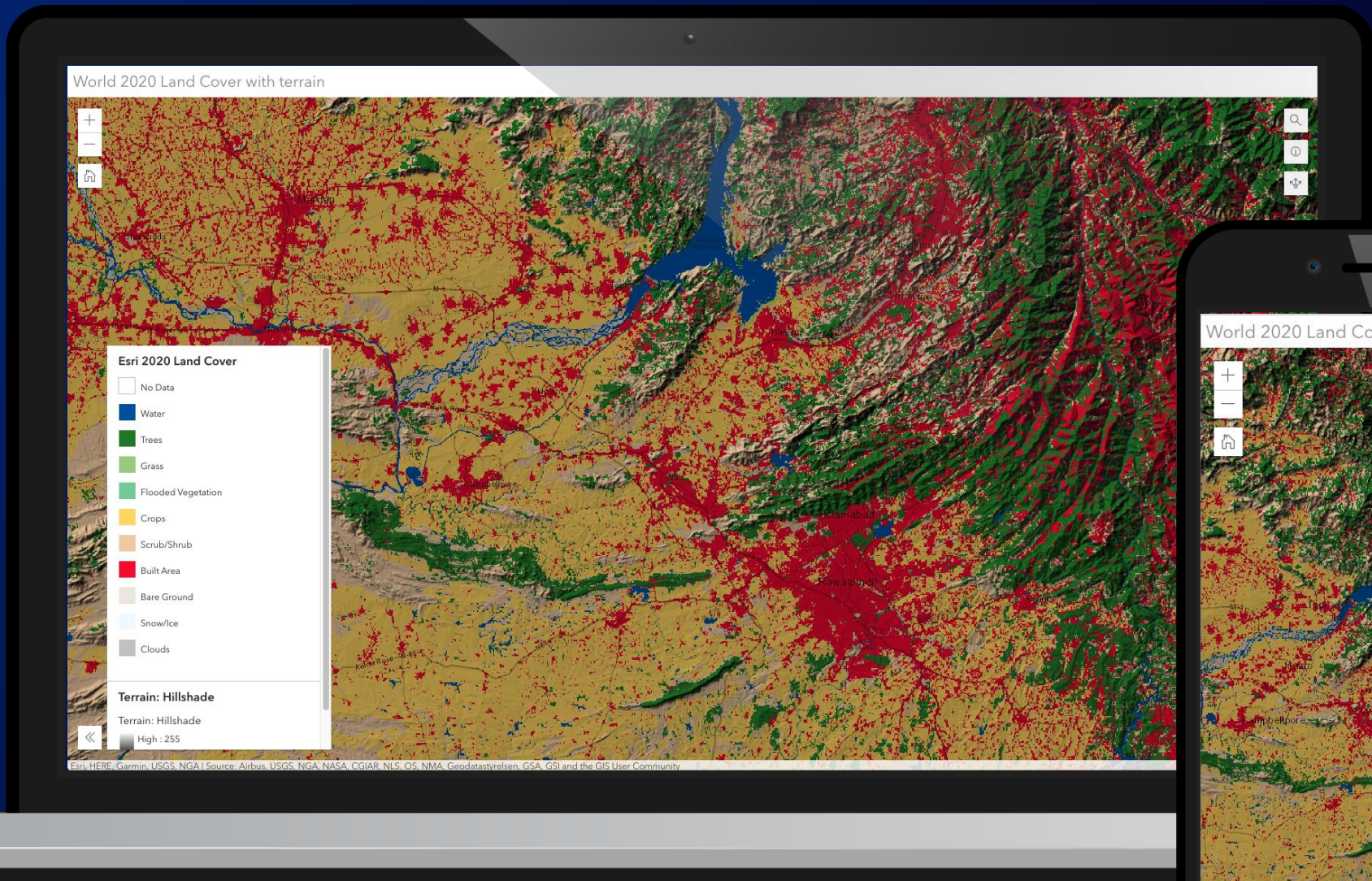
Reminder: Raster Basemaps Moving to Mature Support

Announcements

April 23, 2021



Robert Jensen



<https://arcg.is/1nze8y>

The background features a vibrant, abstract design. On the right side, there is a stylized mountain range with peaks in shades of orange, red, and yellow, set against a dark purple and blue sky. A bright yellow arc curves across the scene. The overall aesthetic is modern and energetic, with a color palette dominated by purples, pinks, oranges, and blues.

Tools & tips for multi-state collaborations

New patterns for sharing curated content

Integrated Geospatial Infrastructure

Connecting organizations across borders, jurisdictions, and sectors

Curated, authoritative catalogs



Climate

Economy

Health

Disasters

Green Infrastructure

Biodiversity

Mobility

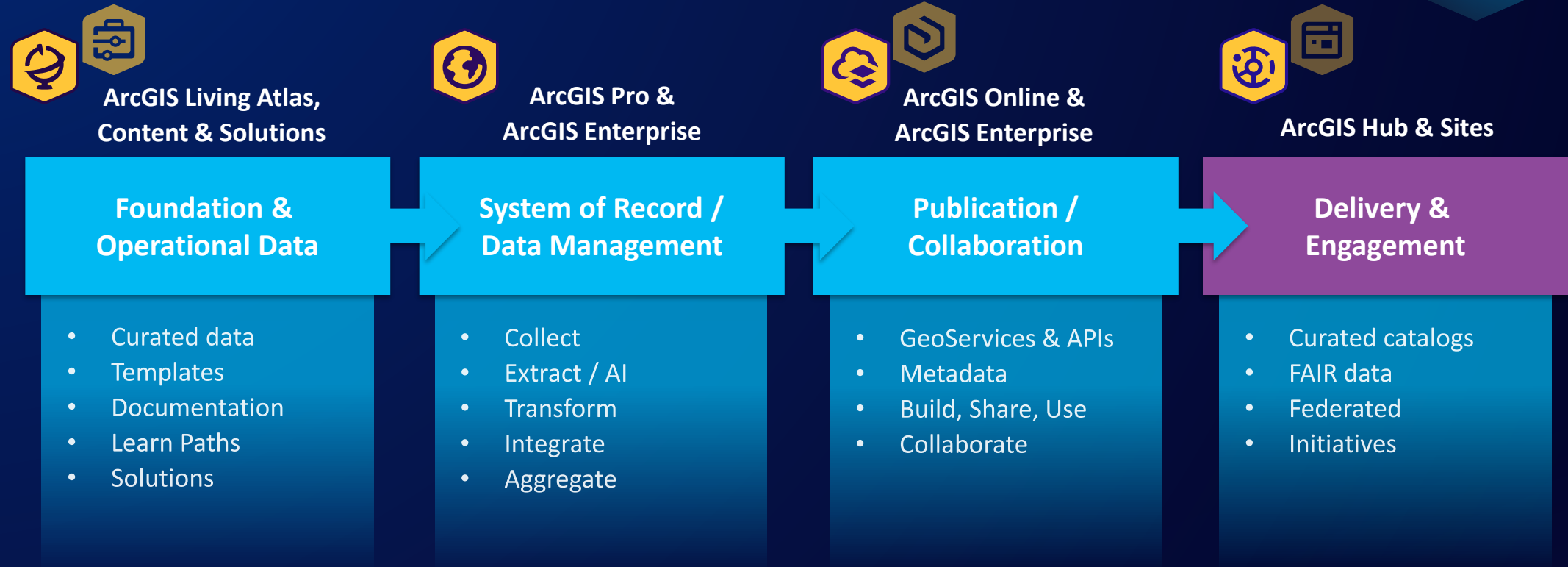
Equity

Regional Planning



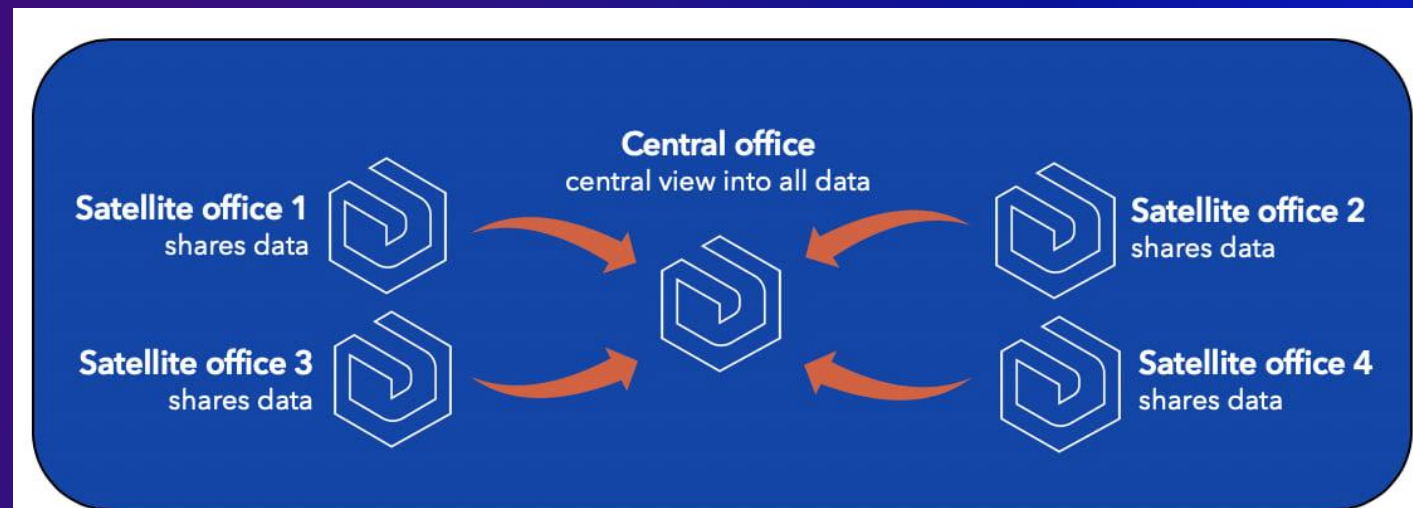
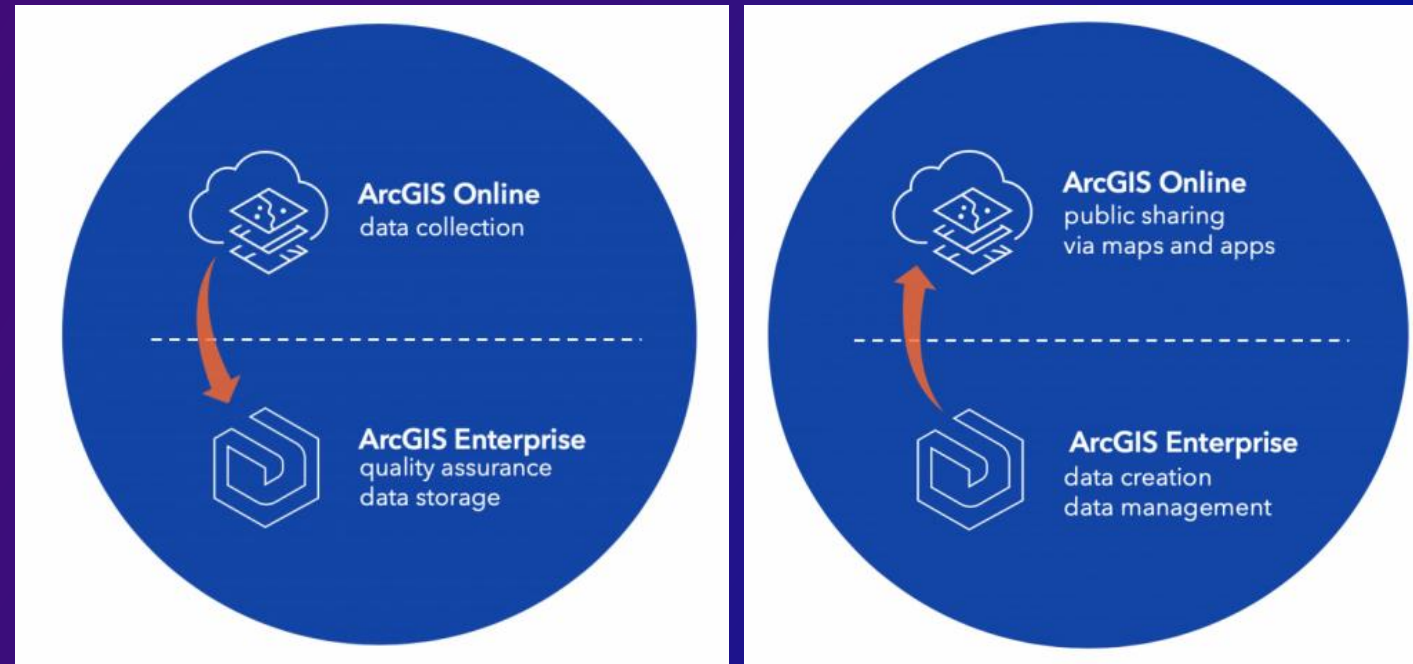
Reusing curated content in decision-ready information products

ArcGIS



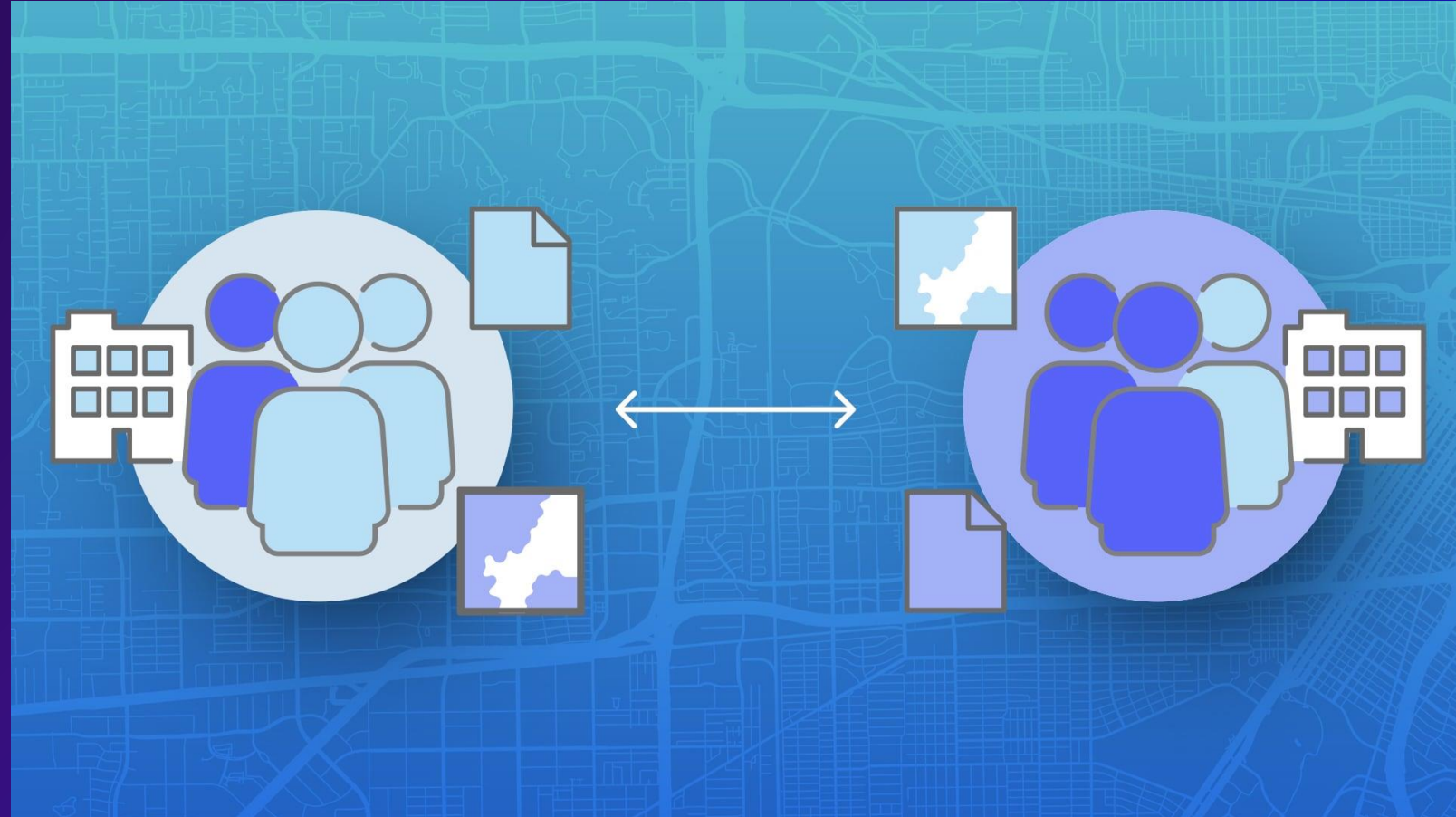
ArcGIS: Distributed Collaboration

- ArcGIS Online to ArcGIS Enterprise (1:n)
- ArcGIS Enterprise to ArcGIS Enterprise



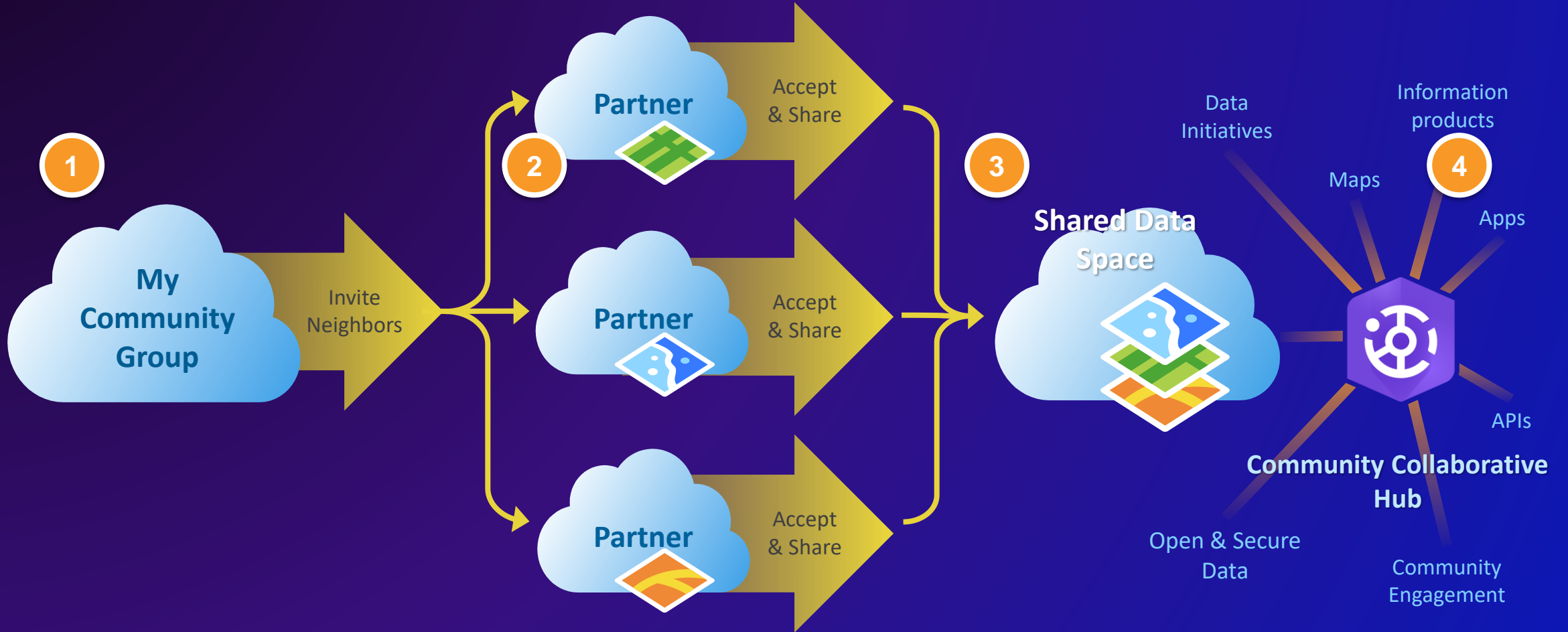
ArcGIS Online: Partnered Collaborations

- ArcGIS Online to ArcGIS Online (n:n)



<https://www.esri.com/arcgis-blog/products/arcgis-online/sharing-collaboration/partnered-collaboration-working-together-across-arcgis-online-organizations/>

ArcGIS Online: Individual Group Membership

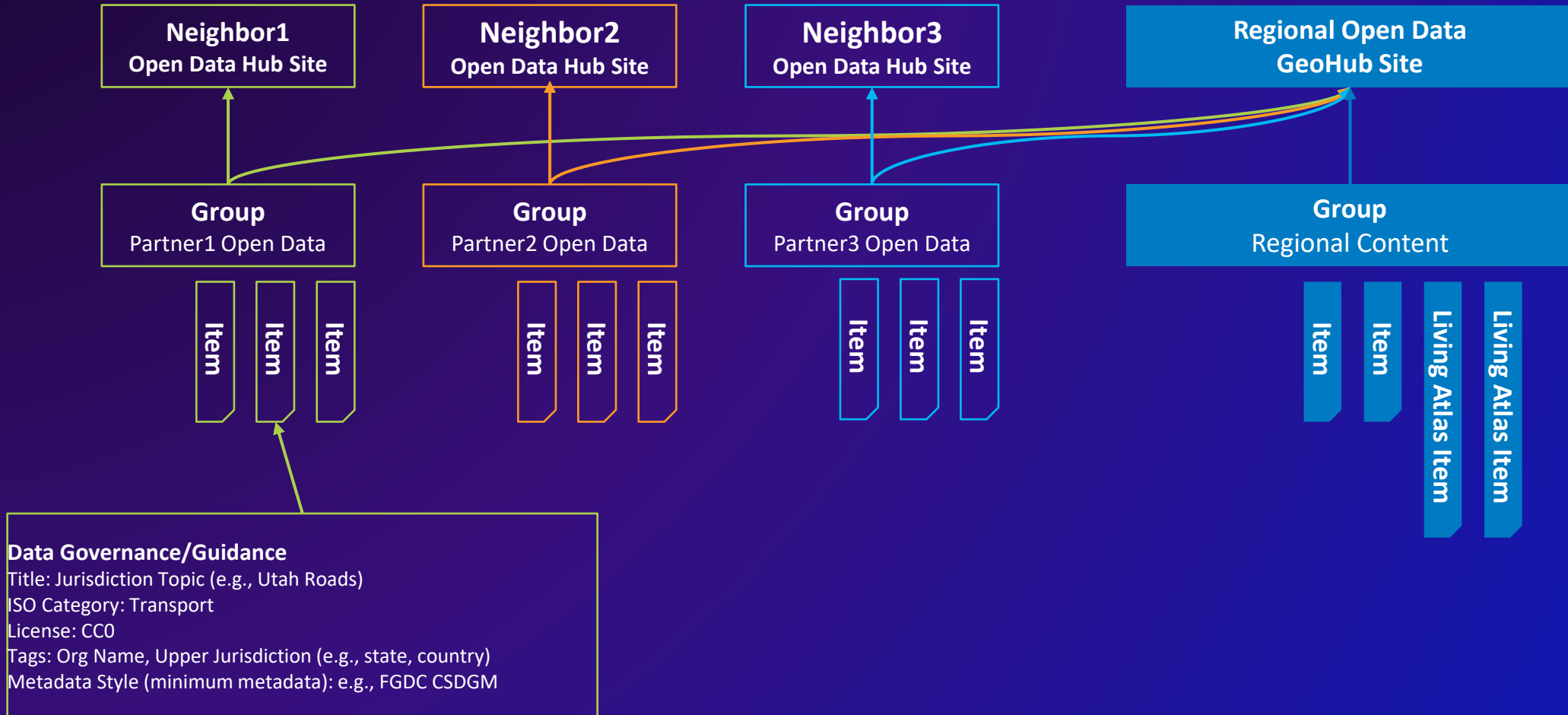


Effective GIS collaboration enabled by geospatial infrastructure

ArcGIS Online: Individual Group Membership



ArcGIS Hub: Groups Manager

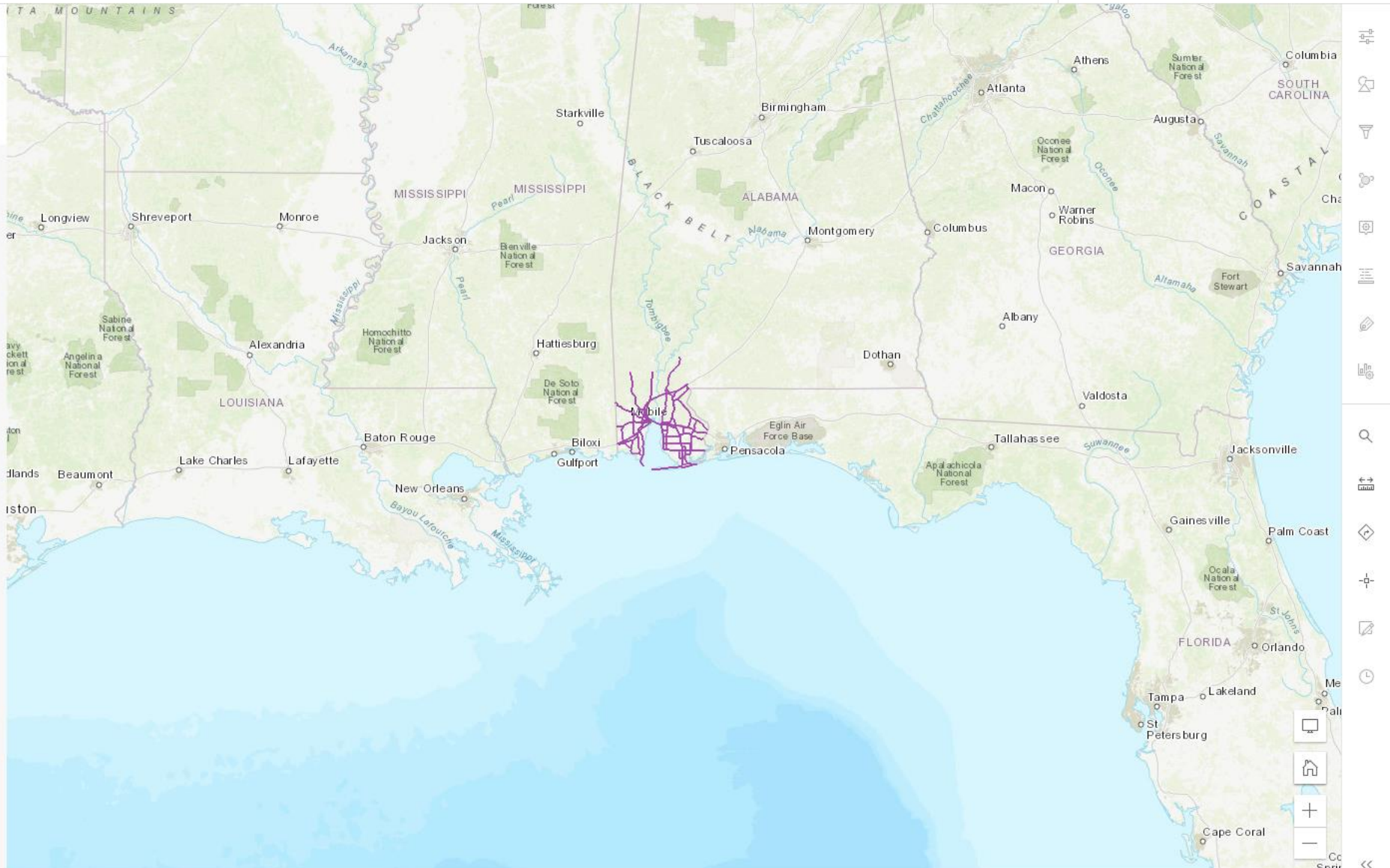


Legend

Hurricane_Evacuation_Routes

—

- Add
- Layers
- Tables
- Basemap
- Charts
- Legend
- Bookmarks
- Save and open
- Map properties
- Share map
- Create app
- Print
- Information
- Collapse

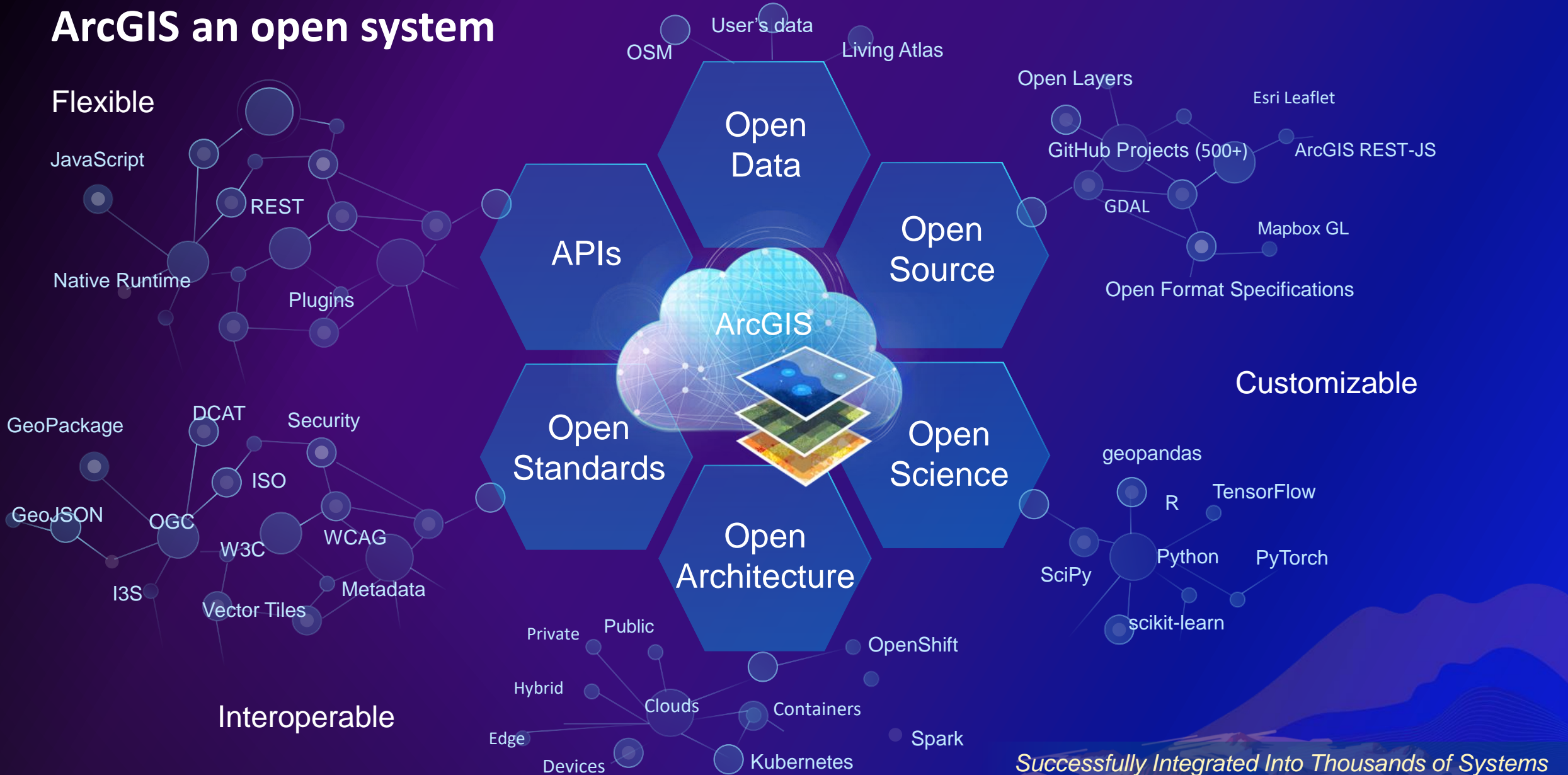


The background features a vibrant, abstract design with a color palette of deep purple, magenta, and bright orange. On the right side, there are stylized, layered mountain peaks in shades of orange and yellow. A thin, curved yellow line arcs across the scene. The overall aesthetic is modern and digital.

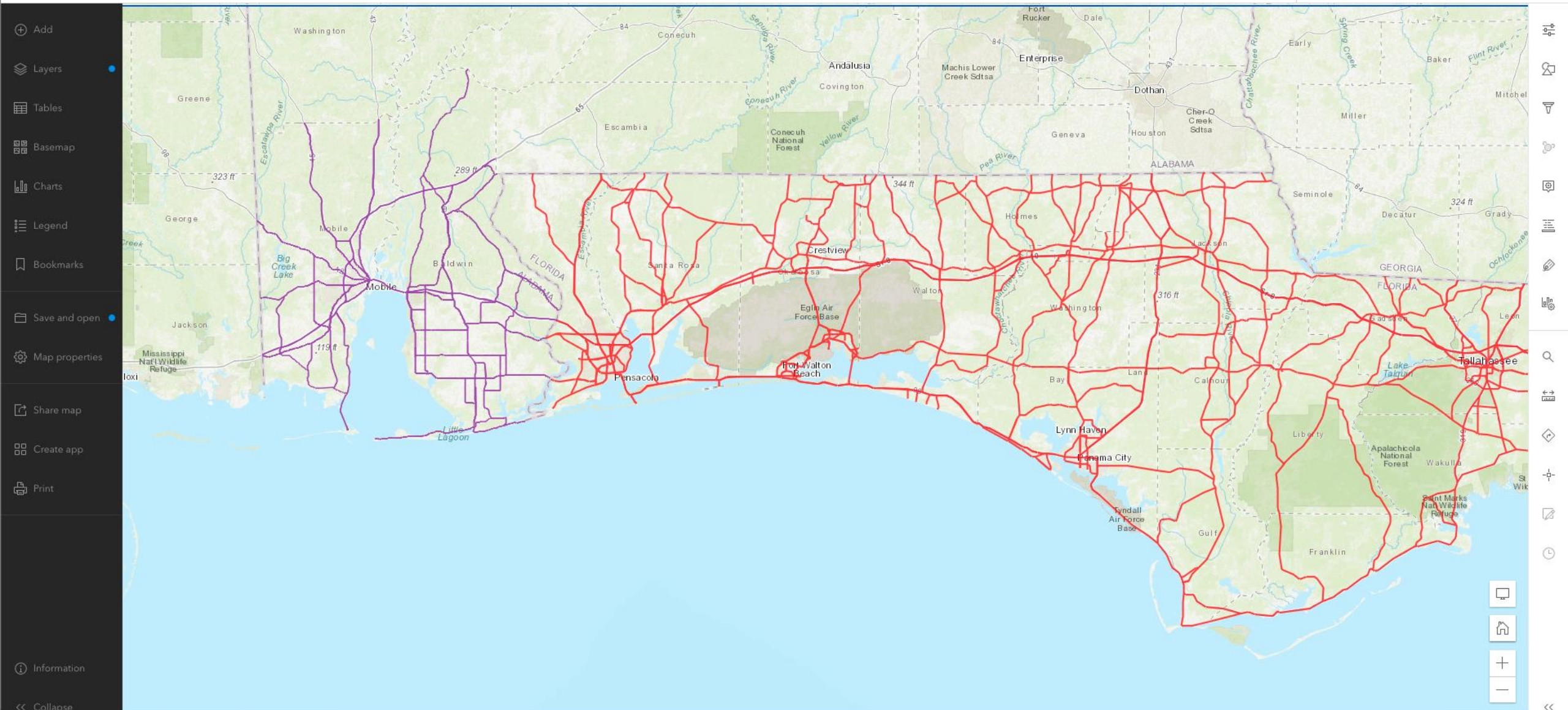
Open standards and FAIR data principles

New open standards support, SEO, and metadata flow

ArcGIS an open system



Successfully Integrated Into Thousands of Systems



- + Add
- Layers
- Tables
- Basemap
- Charts
- Legend
- Bookmarks
- Save and open
- Map properties
- Share map
- Create app
- Print
- Information
- << Collapse

- Full Screen
- Layers
- Tables
- Basemap
- Charts
- Legend
- Bookmarks
- Save and open
- Map properties
- Share map
- Create app
- Print
- Information
- <<

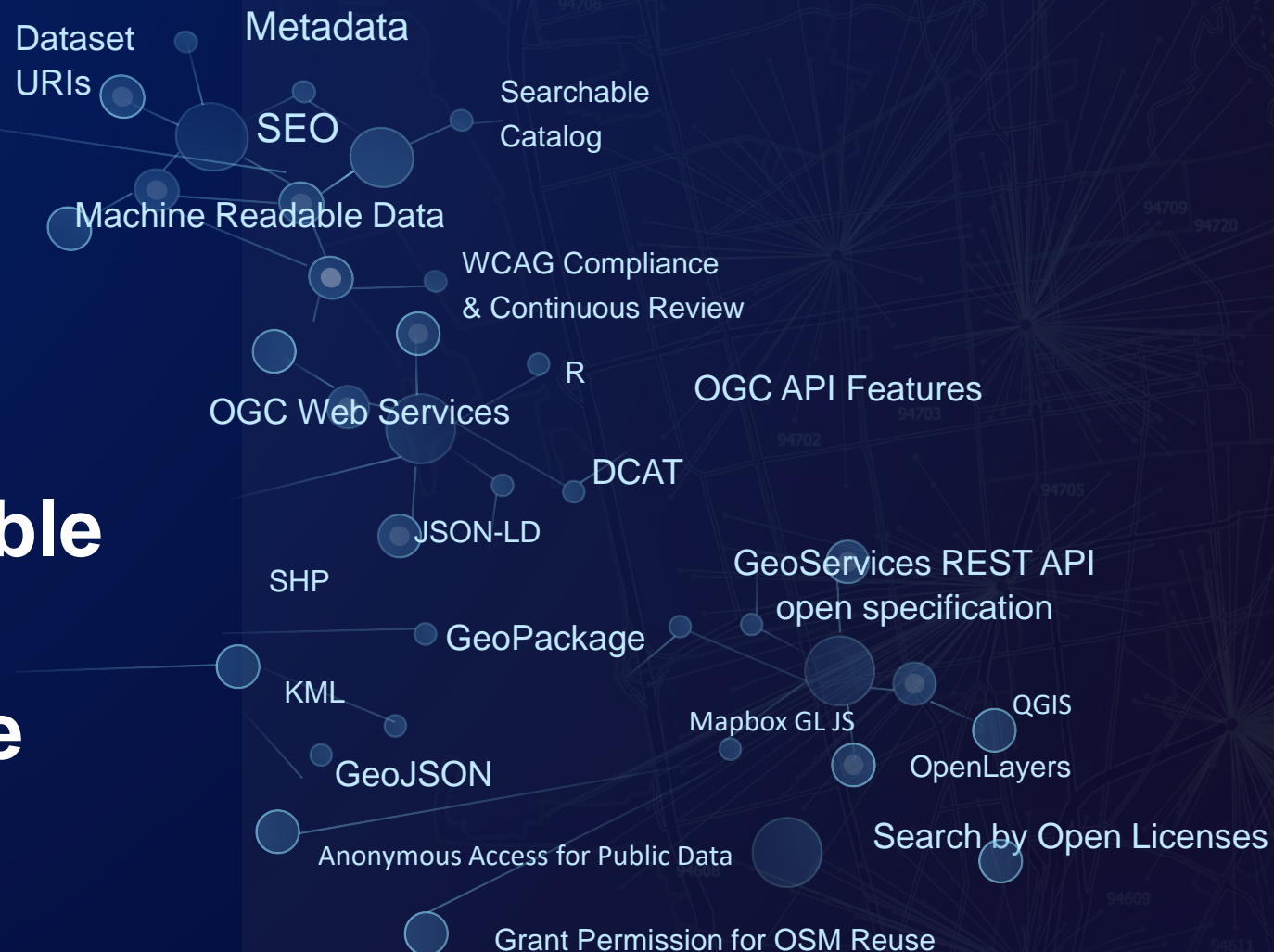
FAIR data principles

Findable

Accessible

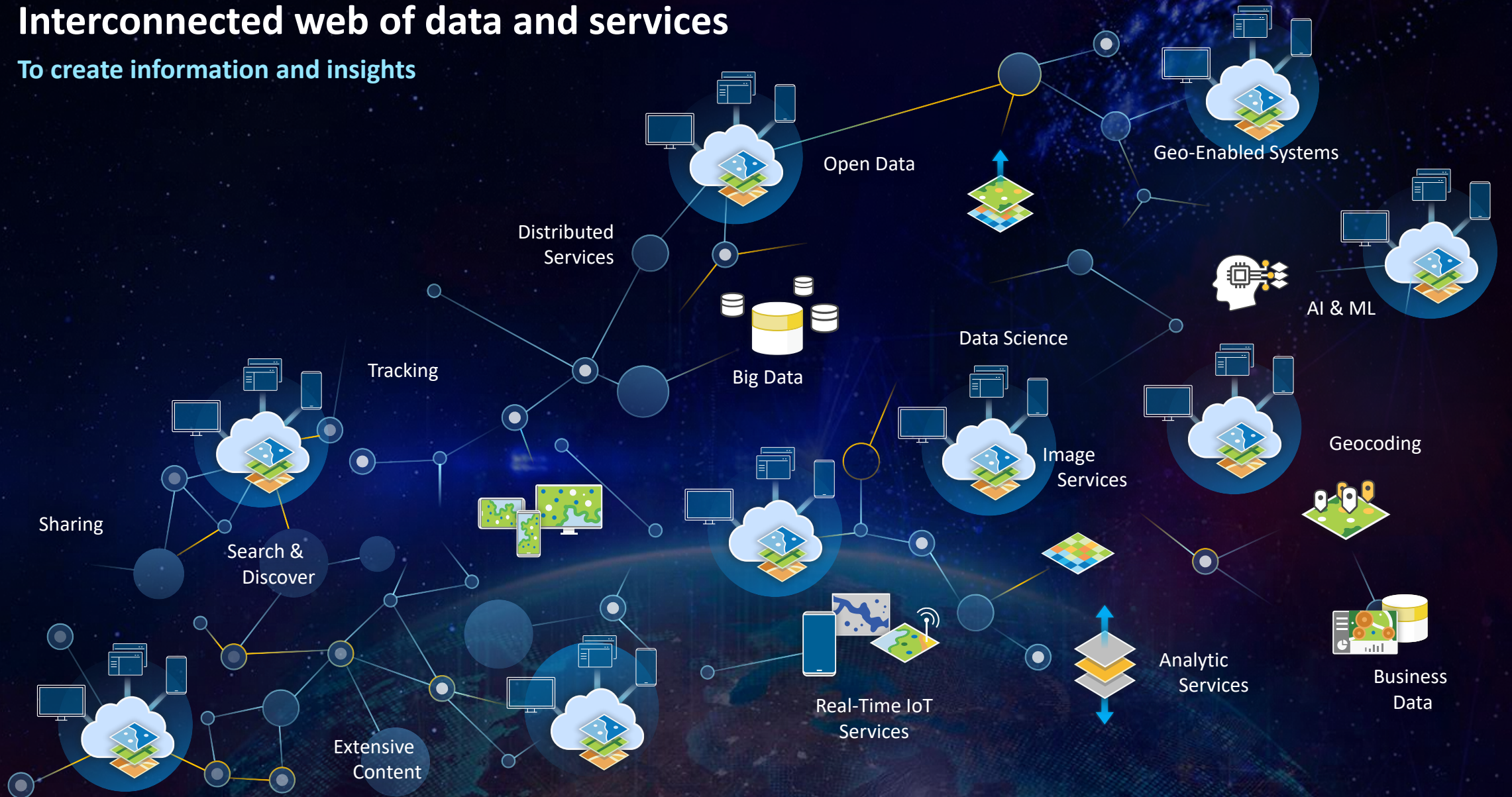
Interoperable

Reusable

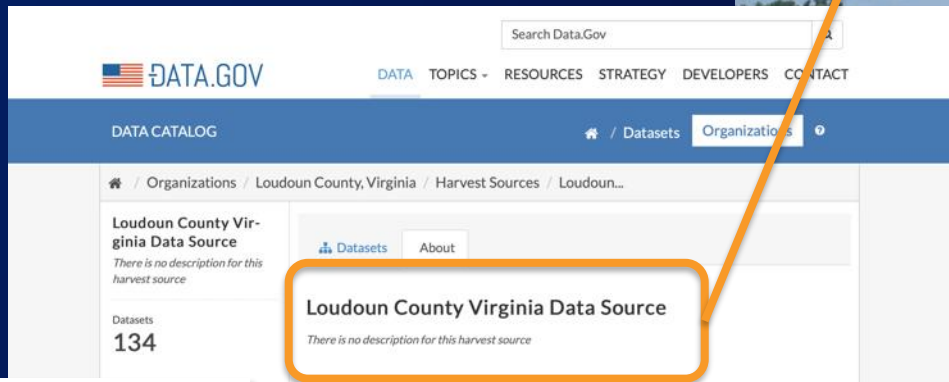


Interconnected web of data and services

To create information and insights



Open Data



Metadata Source

Data.json Metadata
Download Metadata

Harvested from Loudoun County Virginia Data Source

Harvest Source

Field	Value
Source	https://loudoun

Loudoun County GeoHub

Loudoun Conservation Easements

Loudoun County Loudoun GIS

Summary

A conservation easement restricts the use or development of real property.

[View Full Details](#)

Dataset
Feature Layer

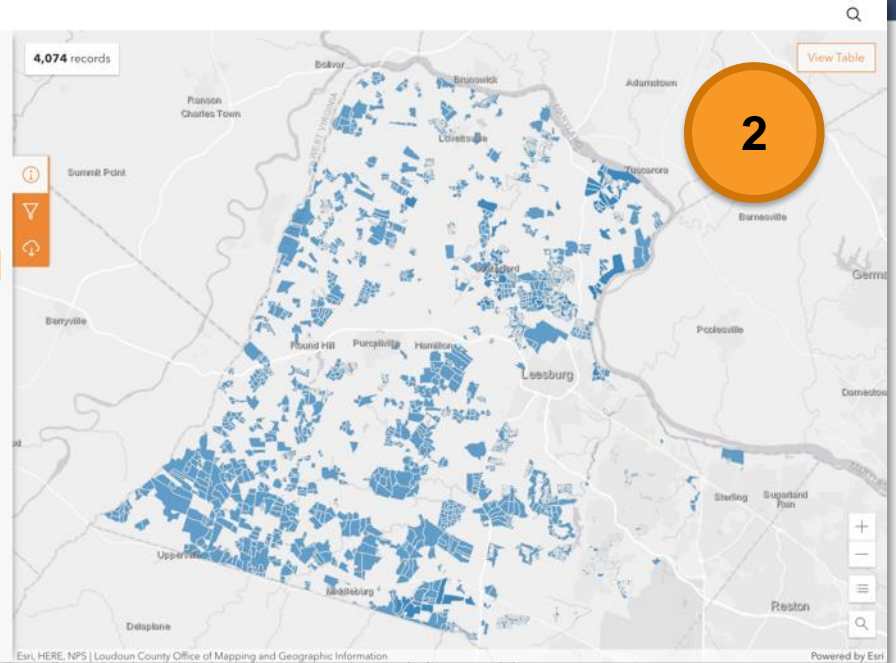
April 8, 2021
Date Updated

October 18, 2018
Published Date

4,074 Records
[View data table](#)

Public
Anyone can see this content

Custom License
[View details of license](#)



- **Standards-based FGDC, ISO, and INSPIRE Metadata**
 - W3C Data Catalog Vocabulary DCAT
 - European Application Profile DCAT-AP



<https://geohub-loudoungis.opendata.arcgis.com>
<https://data.gov> (Loudoun)

The background is a vibrant, abstract composition of overlapping geometric shapes and organic forms. It features a color palette of deep purples, magentas, pinks, oranges, and blues. A prominent yellow arc curves across the right side. In the bottom right corner, there is a stylized, high-contrast illustration of a mountain range with jagged peaks and a winding path or road. The overall aesthetic is modern and dynamic, suggesting speed and innovation.

Solutions to jump start

Helping your partners put data into action

ArcGIS Solutions

Industry-Specific Maps and Apps

Preconfigured

Tools

Workflows

Apps

Comprehensive Systems

Maps

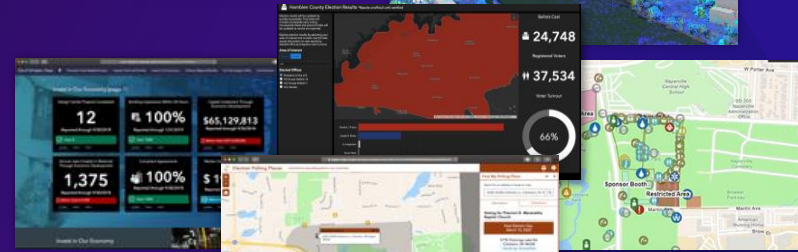
Data Models

Initiatives

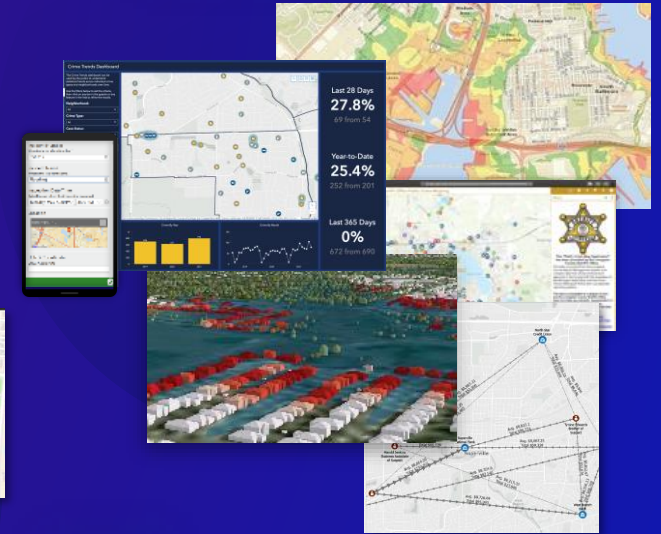
Dashboards

- Extensive (100+)
- Easy to Deploy
- Come with ArcGIS
- Fully Supported

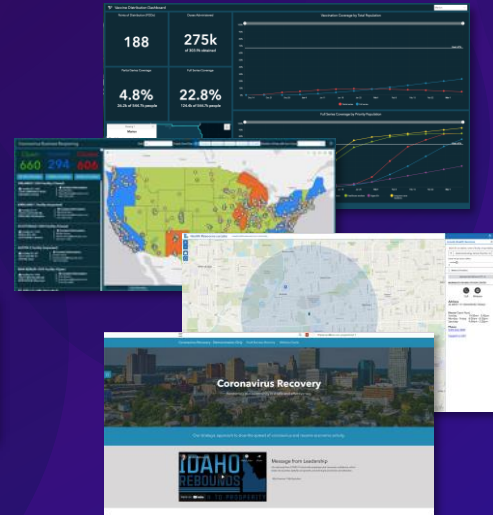
Local & State Government



Emergency Management & Public Safety

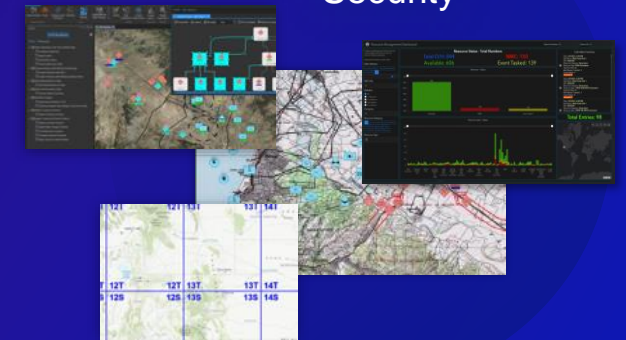


Health & Human Services

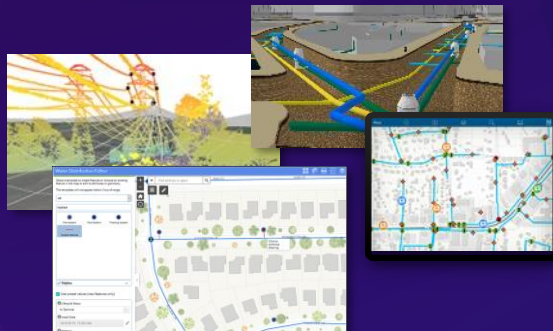


COVID-19

Defense & Security



Utilities & Telecom



EQUITY



... Help Users Quickly Realize Value

Modernizing Damage Assessment

Esri's Damage Assessment solution helps you



Streamline assessments



**Inform and engage the
public**



Improve collaboration

New Debris Management Solution



Road Debris Clearance
Cut & Push | Reopen



Assess Debris
Location | Volume | Type



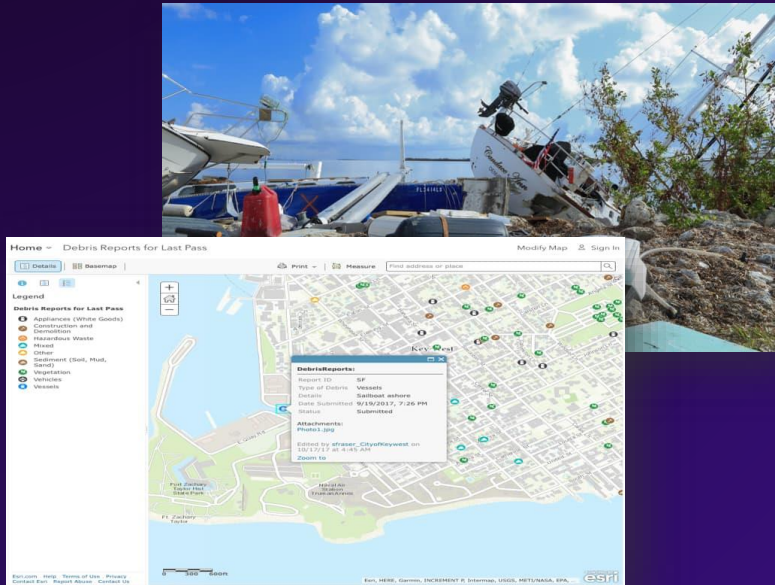
Manage Removal
Monitoring | Public Info

Managers | Operations Leads | Assessors | Clearance Crews | Monitors | Contractors | Residents

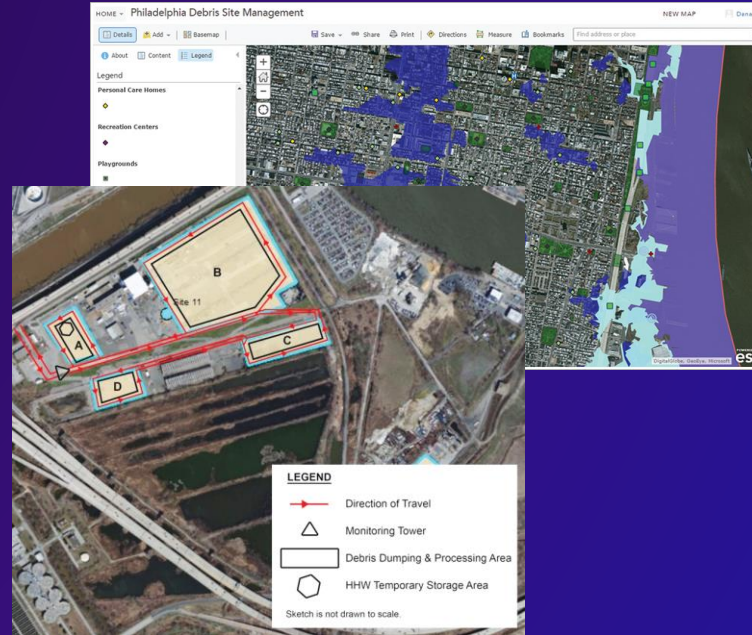
ArcGIS supports disaster debris management

Case Studies

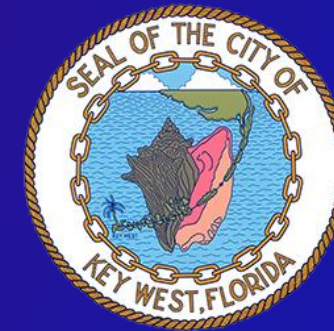
Solution Development Partners



Hurricane Irma Debris Reporting
Key West, FL



Debris Site Planning &
Management
Philadelphia, PA



Business Partners

Virtual resource library

Integrated Geospatial Infrastructure

Overview **Get Started**

Integrated Geospatial Infrastructure

Address shared challenges

Interconnect organizations across borders, jurisdictions, and sectors



esri®

THE
SCIENCE
OF
WHERE®