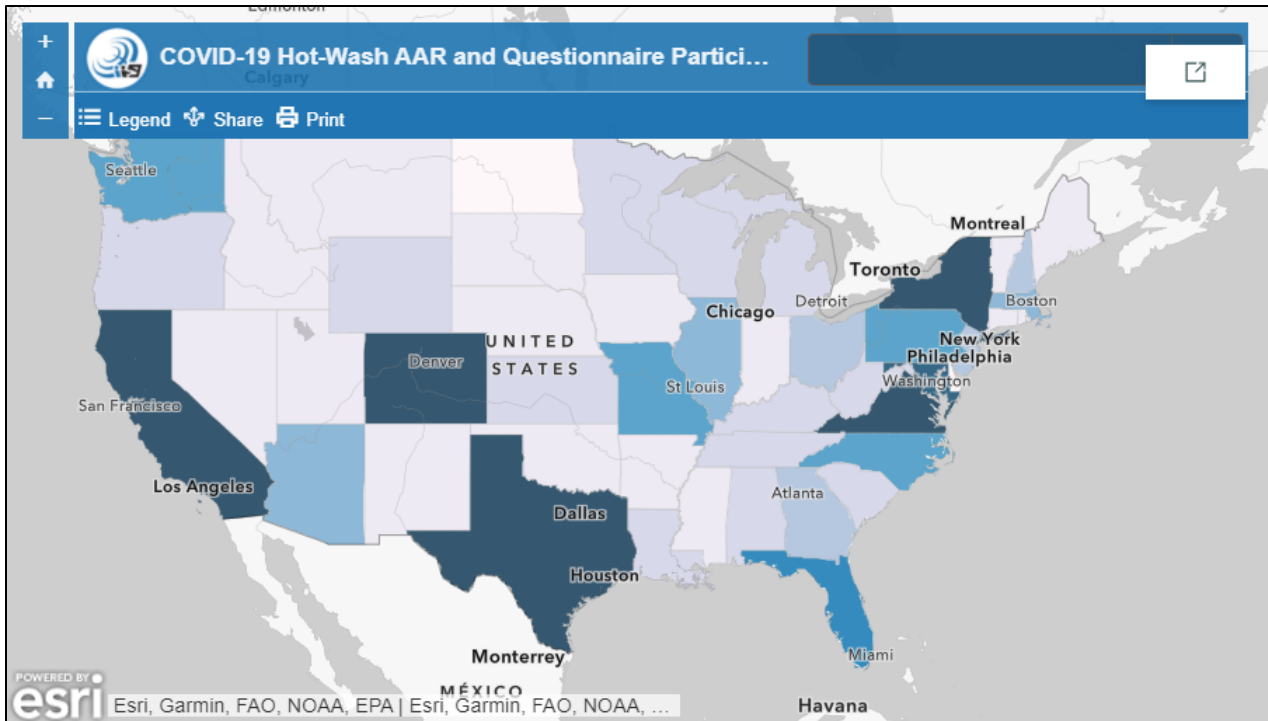
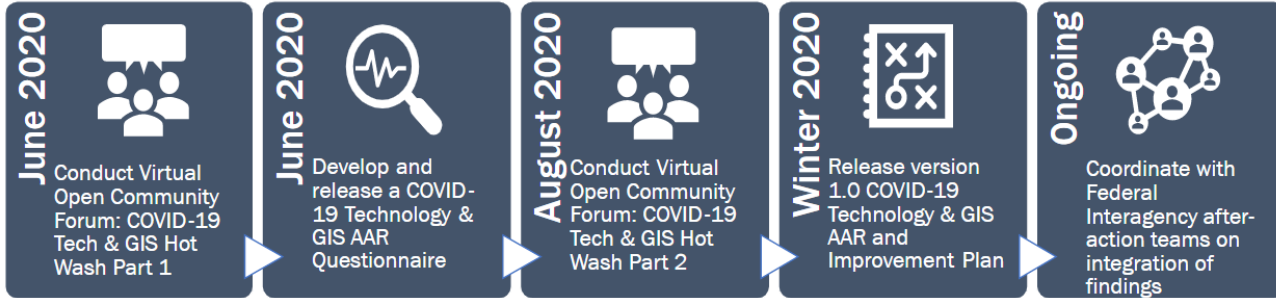


A microscopic image of a virus particle, likely a coronavirus, showing its characteristic spherical shape and surface covered in dark, irregular spikes. The background is a dark, textured blue.

National Pandemic GIS & Informatics Task Force

COVID-19 AFTER-ACTION REVIEW



COVID-19 Tech & GIS After Action Report & Improvement Plan

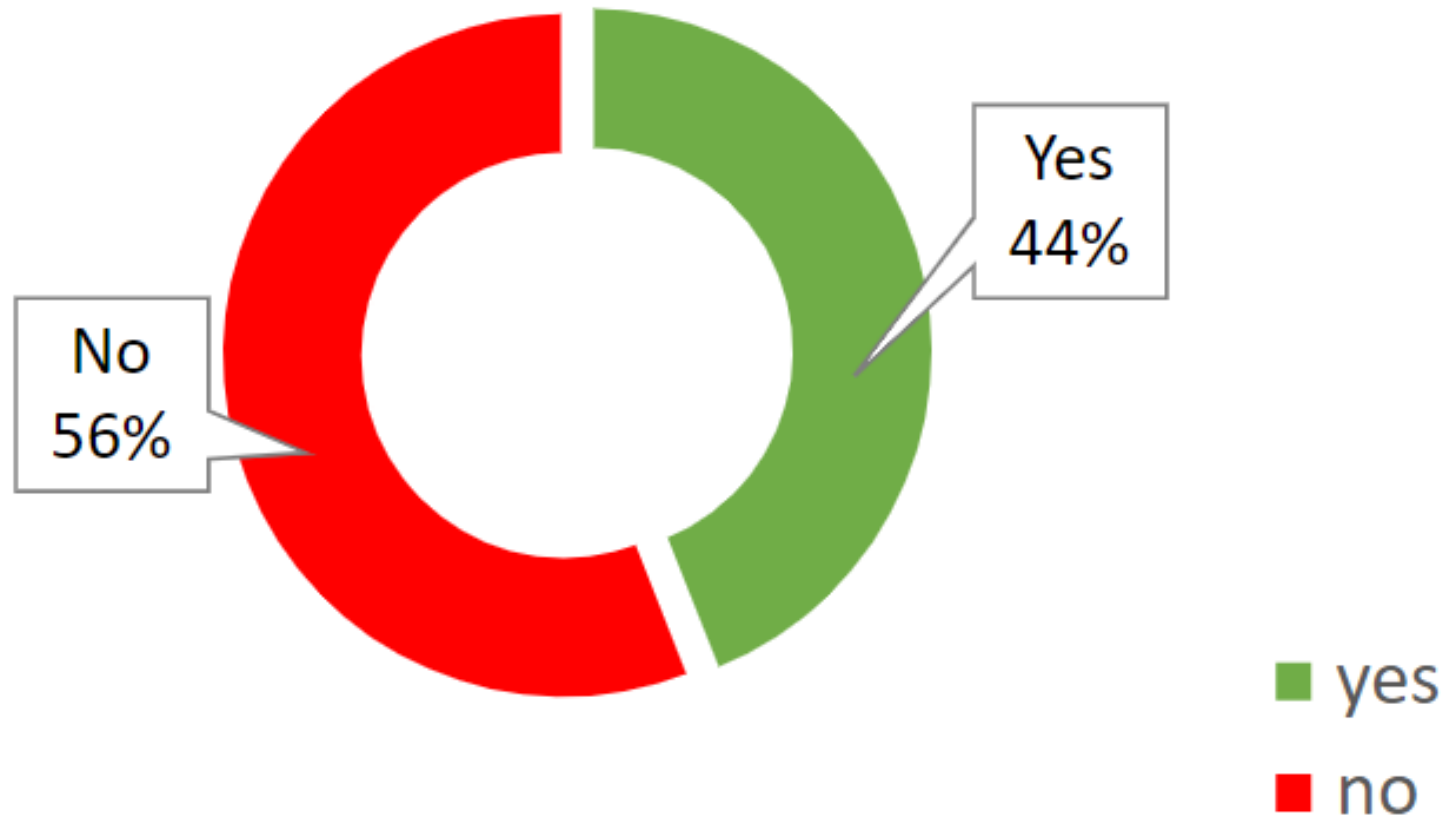
National Pandemic GIS & Informatics Task Force

COVID-19 Tech & GIS After Action Report & Improvement Plan

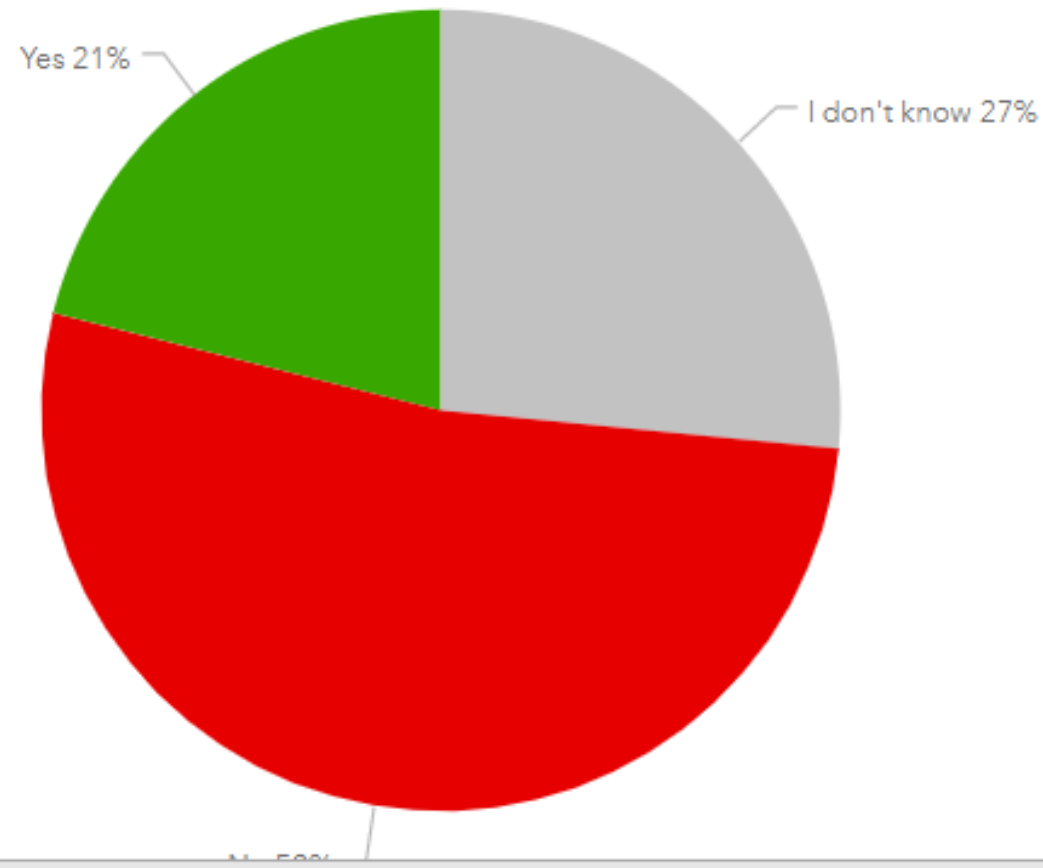
January 8, 2021

<https://arcg.is/14Sau90>

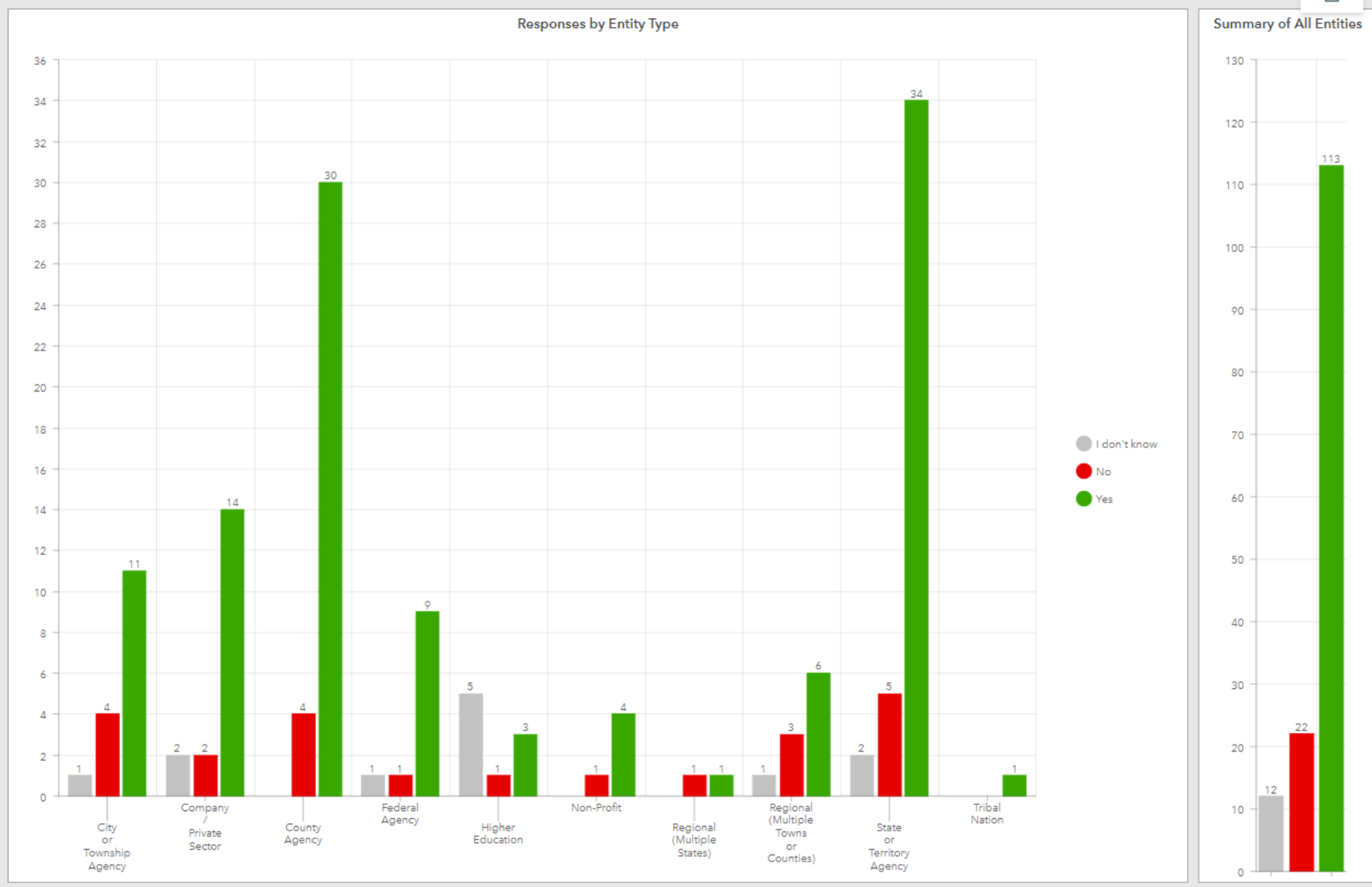
DID YOUR AGENCY SUCCESSFULLY USE IT'S PANDEMIC RESPONSE PLAN TO GUIDE COVID-19 RESPONSE



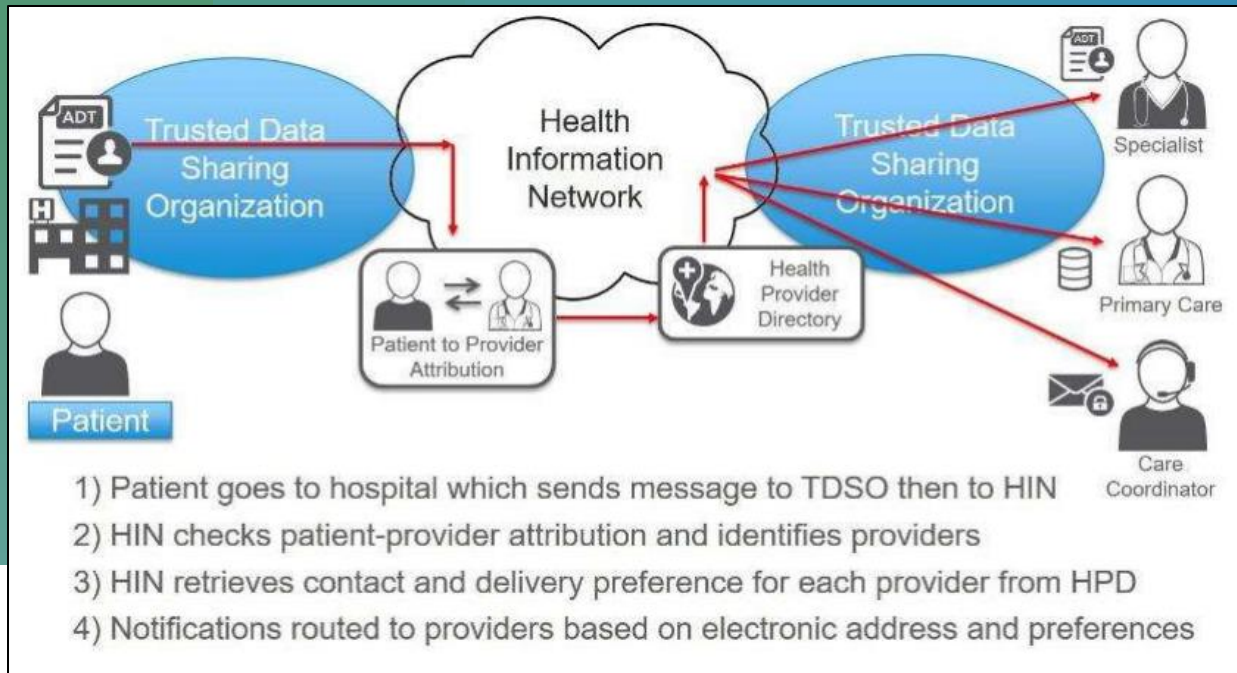
Had a Pandemic Response Plan in place that included the production and use of data-driven decision support tech



Active Engagement of Technology, GIS, and/or Data Science Staff in COVID-19 Operations



Health Information Sharing Standards



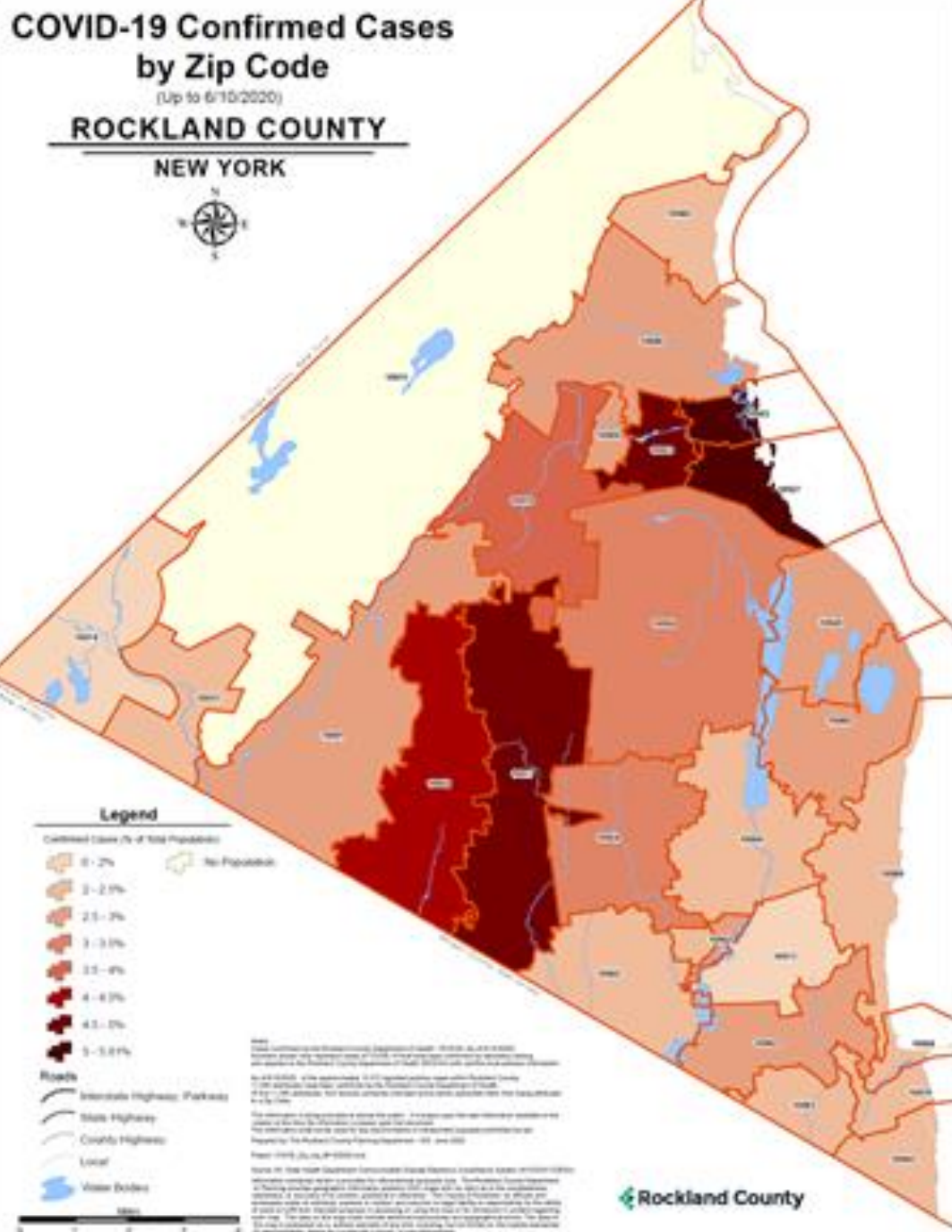
Automated Health Facility Data Sharing

COVID-19 Confirmed Cases by Zip Code

(Up to 6/10/2020)

ROCKLAND COUNTY

NEW YORK



Legend

- Confirmed Cases (% of Total Population)
- 0 - 2%
 - 2 - 2.5%
 - 2.5 - 3%
 - 3 - 3.5%
 - 3.5 - 4%
 - 4 - 4.5%
 - 4.5 - 5%
 - 5 - 5.8%
- No Population

- Roads
- Interstate Highways, Parkways
 - State Highways
 - County Highways
 - Local
- Water Bodies

Rockland County is an equal opportunity employer. All persons shall have an equal opportunity to apply for and to be considered for employment without regard to race, color, sex, religion, age, national origin, marital status, sexual orientation, gender identity or expression, or any other protected status. This policy applies to all employees, contractors, and vendors. For more information, please contact the Human Resources Department at (845) 875-2000.

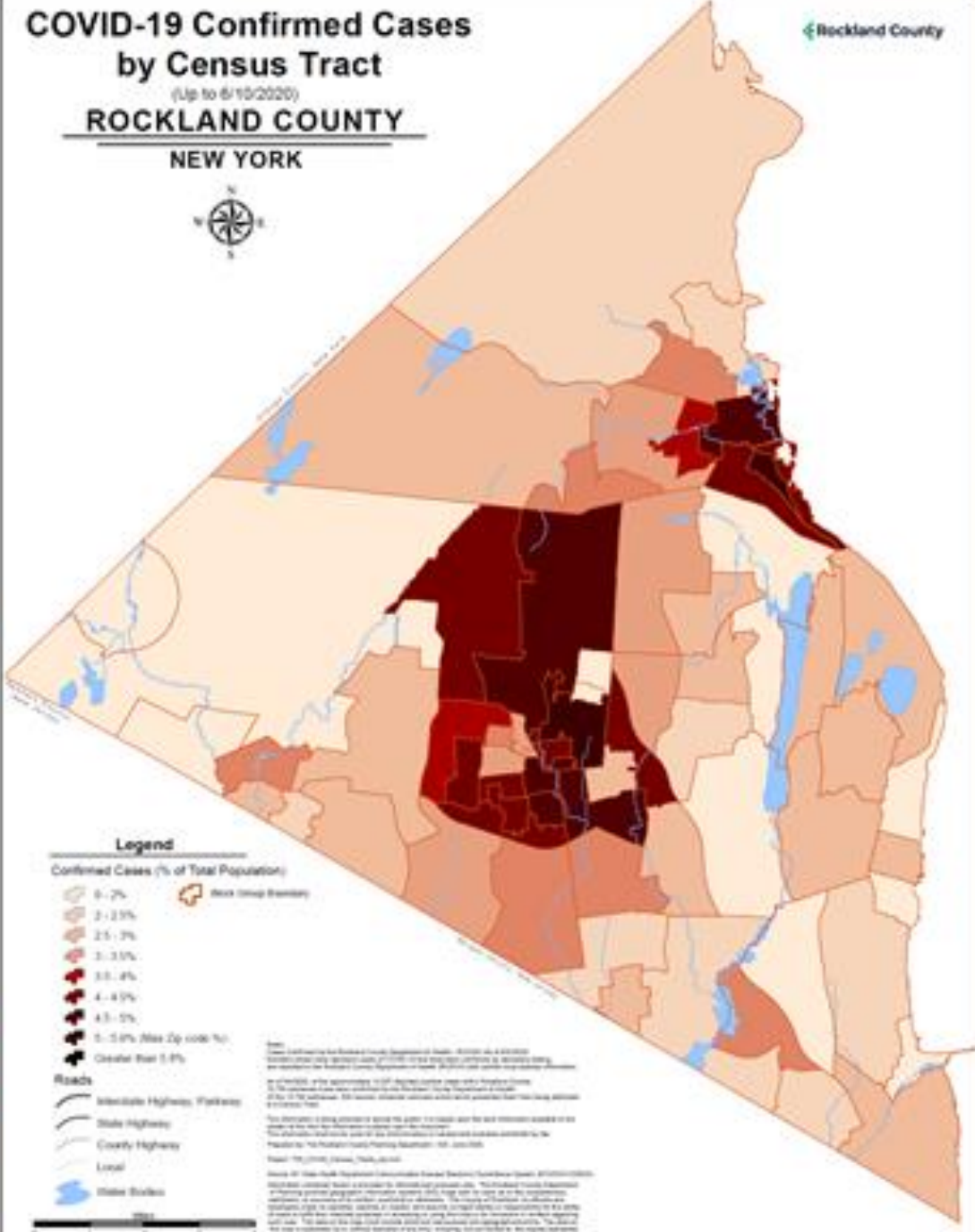


COVID-19 Confirmed Cases by Census Tract

(Up to 6/10/2020)

ROCKLAND COUNTY

NEW YORK



Legend

- Confirmed Cases (% of Total Population)
- 0 - 2%
 - 2 - 2.5%
 - 2.5 - 3%
 - 3 - 3.5%
 - 3.5 - 4%
 - 4 - 4.5%
 - 4.5 - 5%
 - 5 - 5.8% (Max Zip code %)
 - Greater than 5.8%
- Block Group Boundaries

- Roads
- Interstate Highways, Parkways
 - State Highways
 - County Highways
 - Local
- Water Bodies

Rockland County is an equal opportunity employer. All persons shall have an equal opportunity to apply for and to be considered for employment without regard to race, color, sex, religion, age, national origin, marital status, sexual orientation, gender identity or expression, or any other protected status. This policy applies to all employees, contractors, and vendors. For more information, please contact the Human Resources Department at (845) 875-2000.



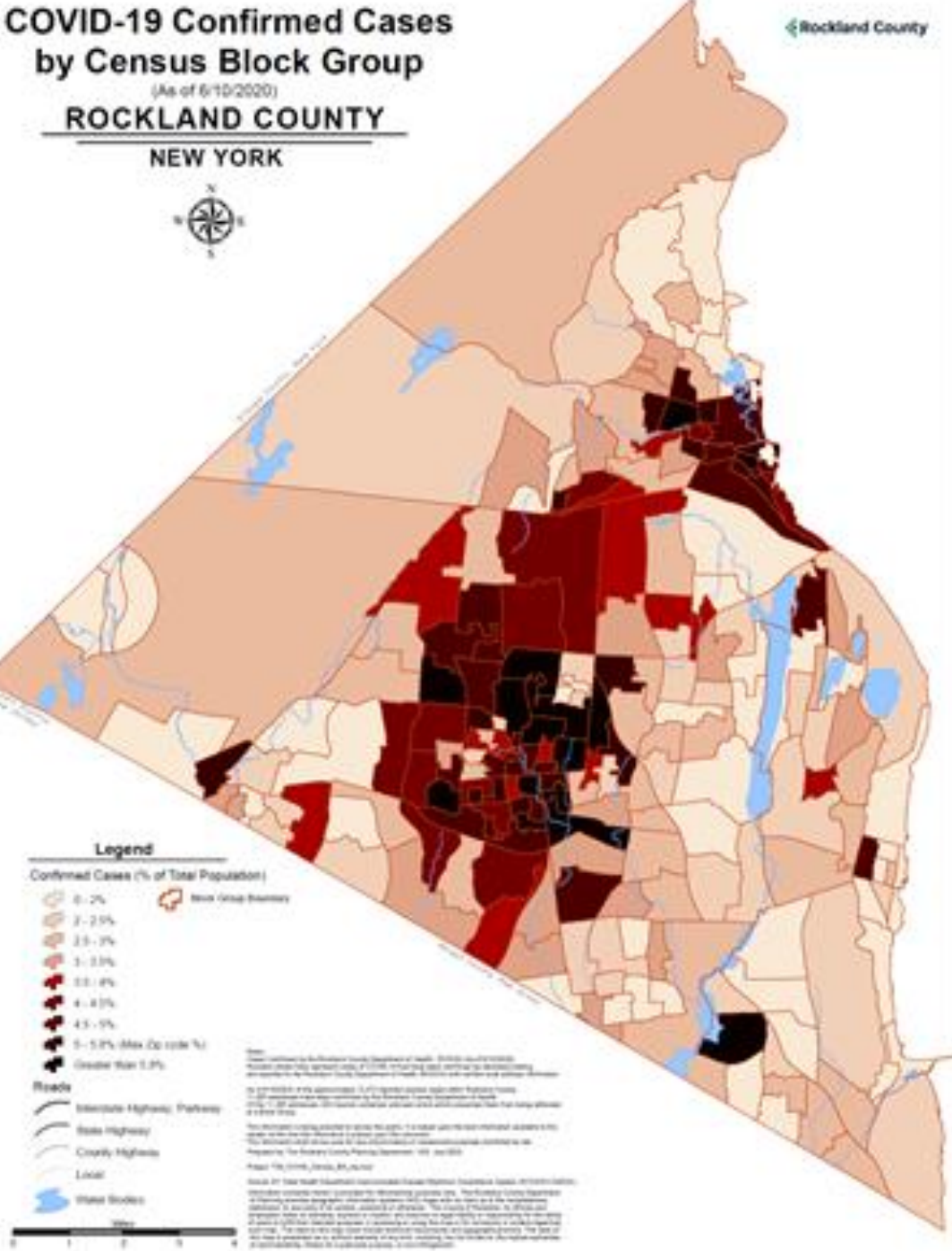


COVID-19 Confirmed Cases by Census Block Group

(As of 6/10/2020)

ROCKLAND COUNTY

NEW YORK

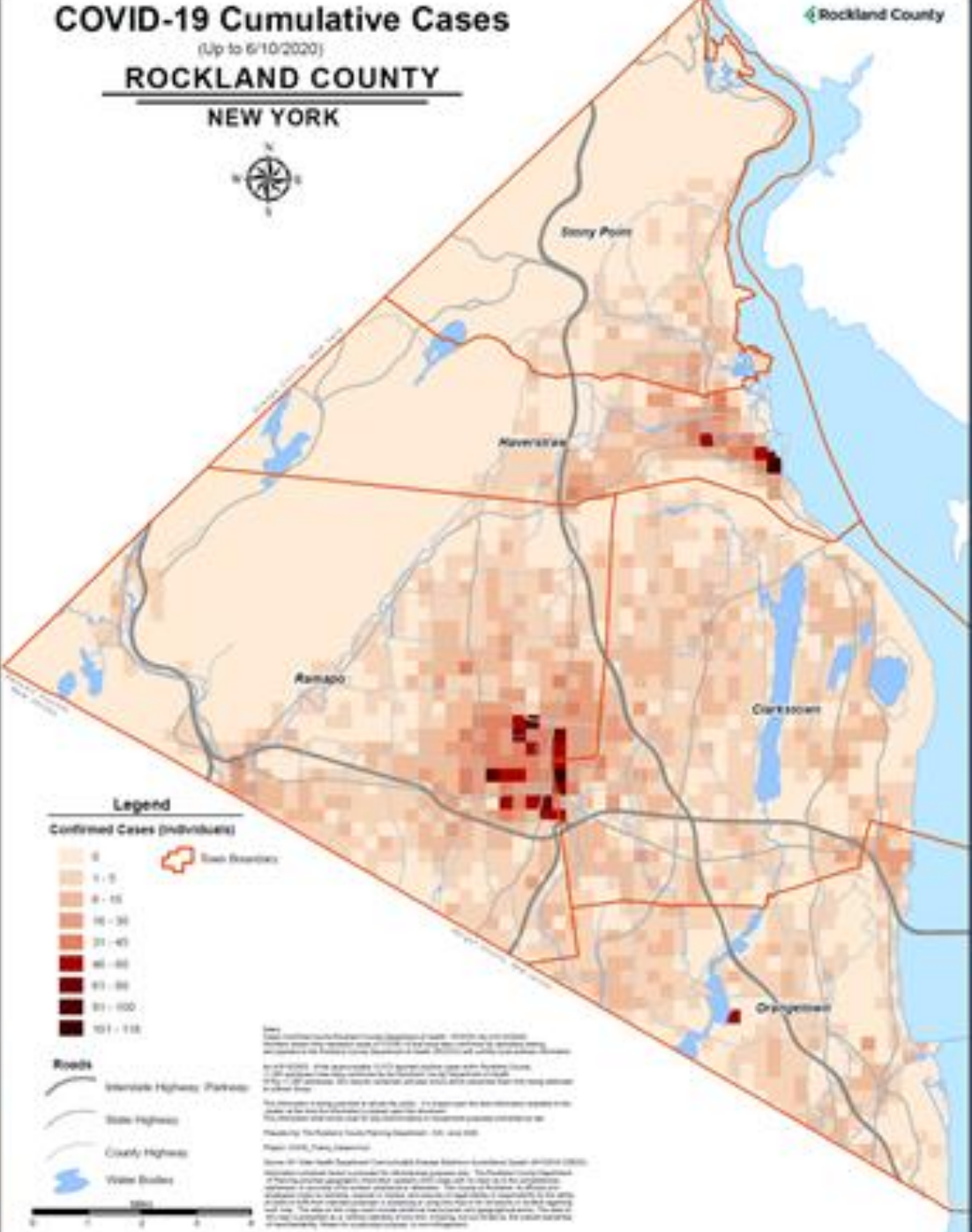


COVID-19 Cumulative Cases

(Up to 6/10/2020)

ROCKLAND COUNTY

NEW YORK



A microscopic image of a virus particle, likely a coronavirus, showing its characteristic spherical shape and surface covered in dark, irregular protrusions. The background is a dark, textured blue.

National Pandemic GIS & Informatics Task Force