



Snow Lake, Arkansas:

A tale of NG911 in the Natural State

Jonathan Duran
State of Arkansas



ARKANSAS
GIS OFFICE

NG911 History

- Act 660, aka Public Safety Act of 2019, establishes 911 coordination in Arkansas
 - *Creates state 911 Board*
 - *Among other purposes,*
“To Develop a Next Generation 911 System”
- July 2020 – GIS Office begins project with 911 Board
 - *Efforts to date have focused on developing PSAP and ESZ boundaries*



How do we get there from here?



Gotta start somewhere...

Where we began...

- PSAP Boundaries
- Emergency Services Boundaries
 - Law
 - Fire
 - EMS





ARKANSAS
GIS OFFICE



**“YOU MUST
UNLEARN
WHAT YOU
HAVE
LEARNED”**

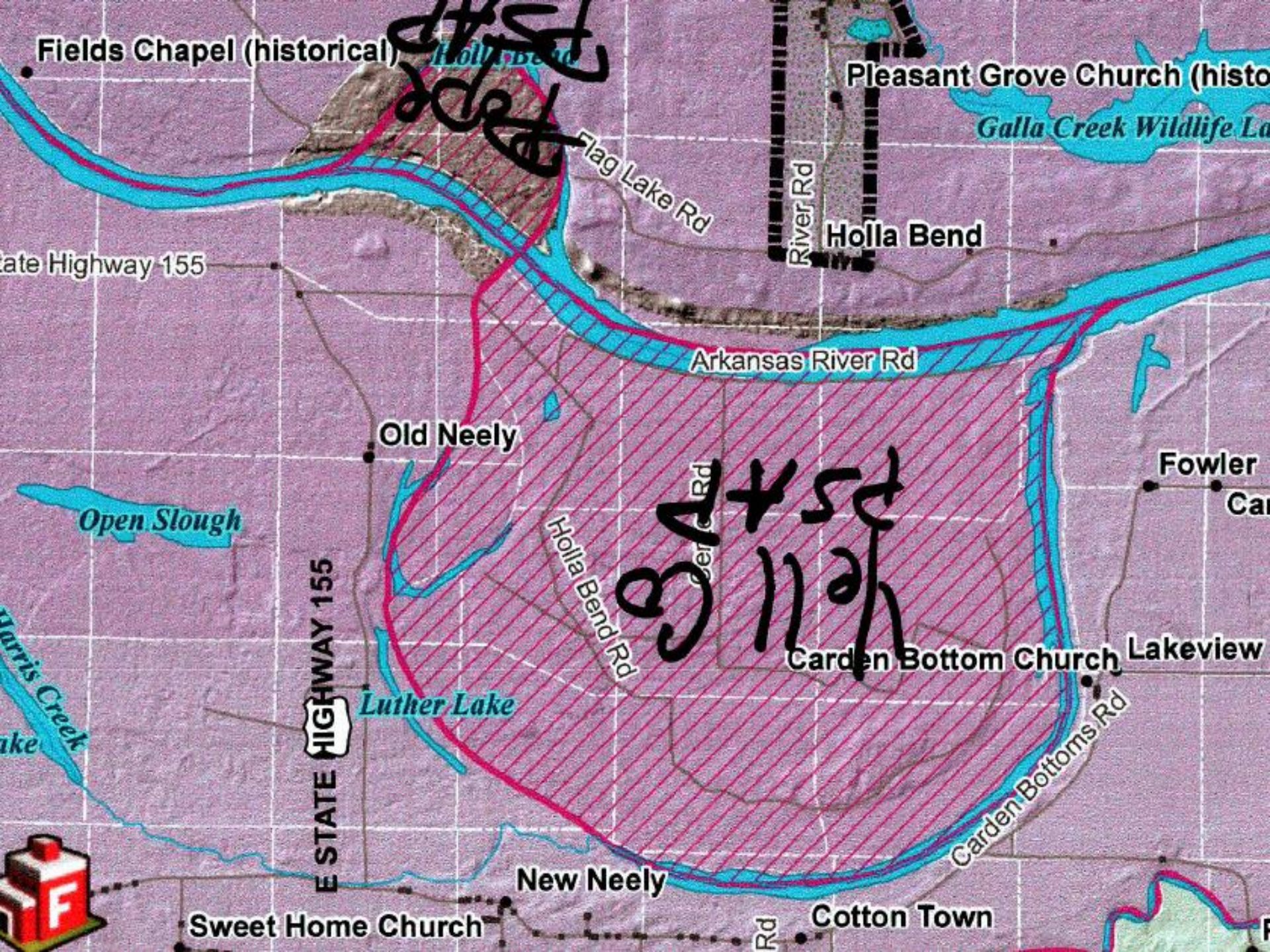


**ARKANSAS
GIS OFFICE**





ARKANSAS
GIS OFFICE



PSAPs

(This ain't about consolidation.)

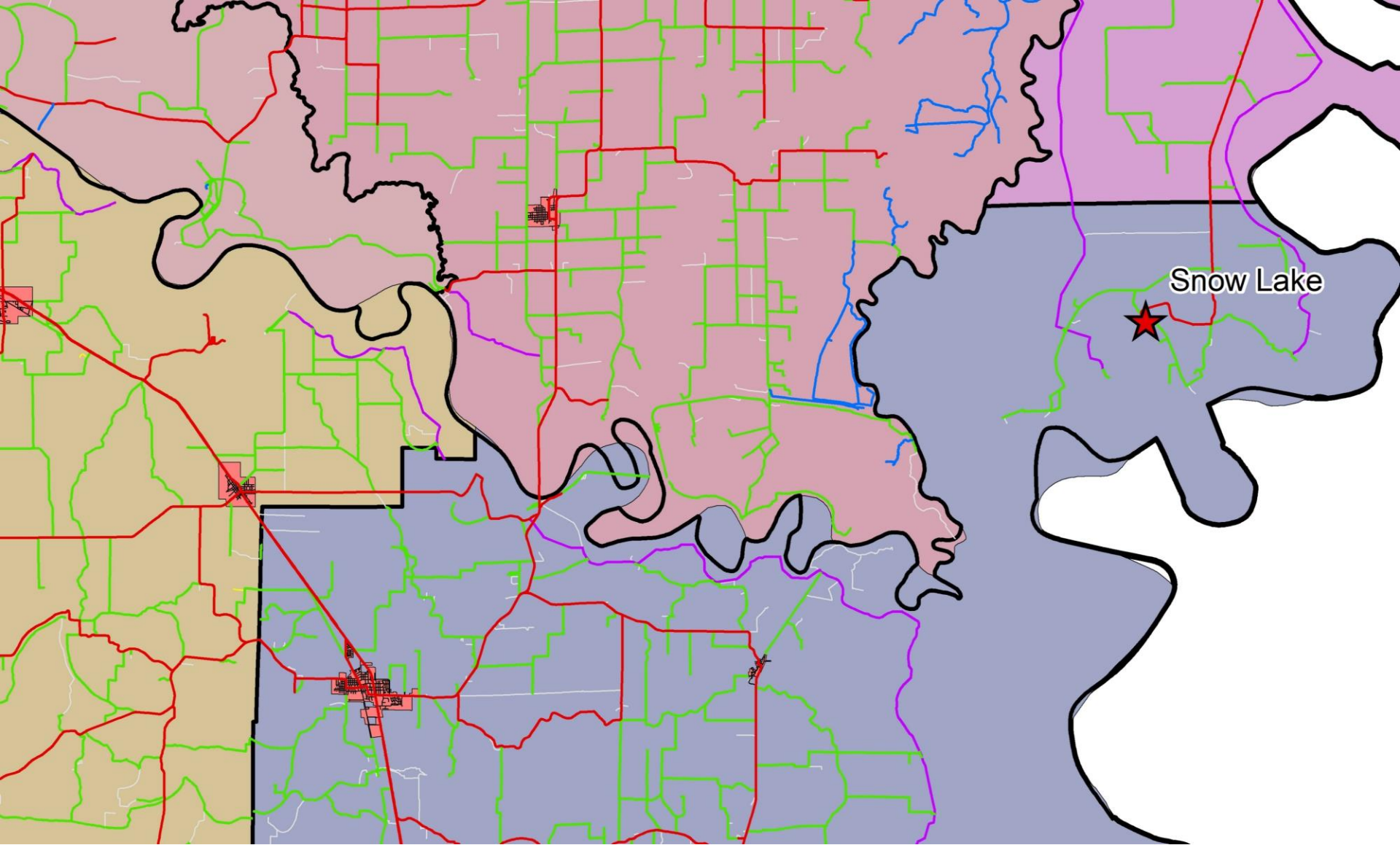


The Snow Lake Paradox

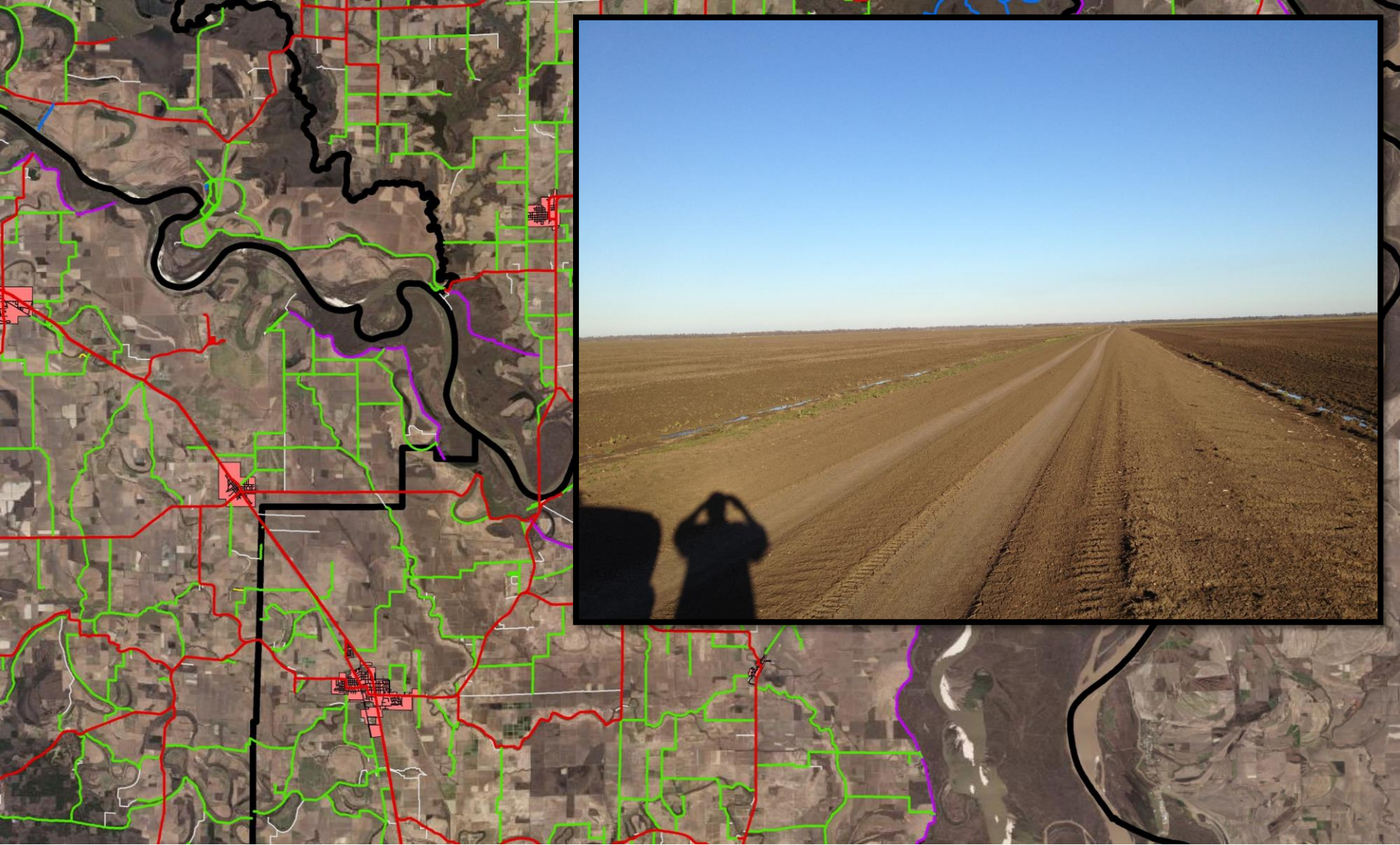


Jurisdiction vs. Response



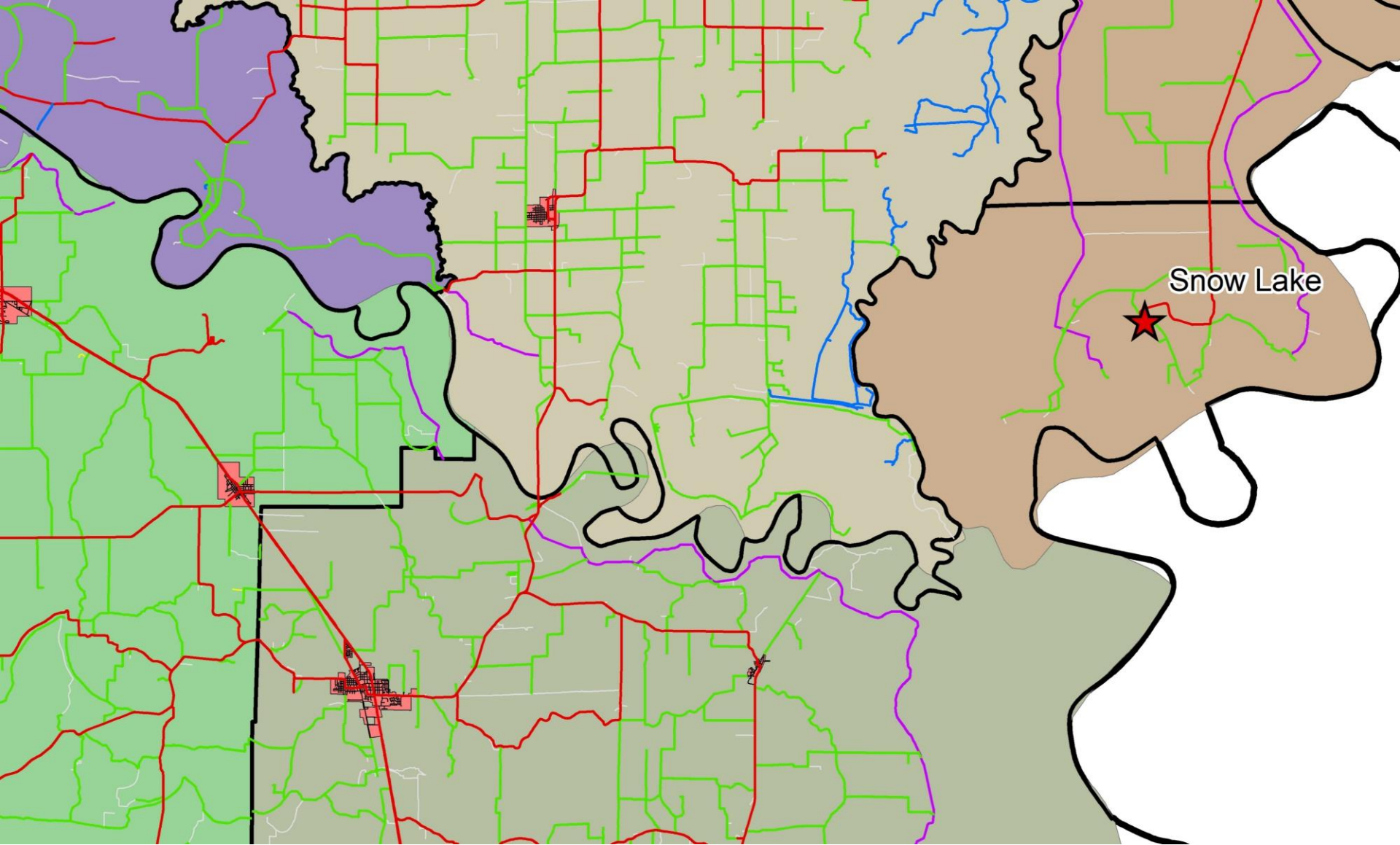


ARKANSAS
GIS OFFICE



ARKANSAS
GIS OFFICE





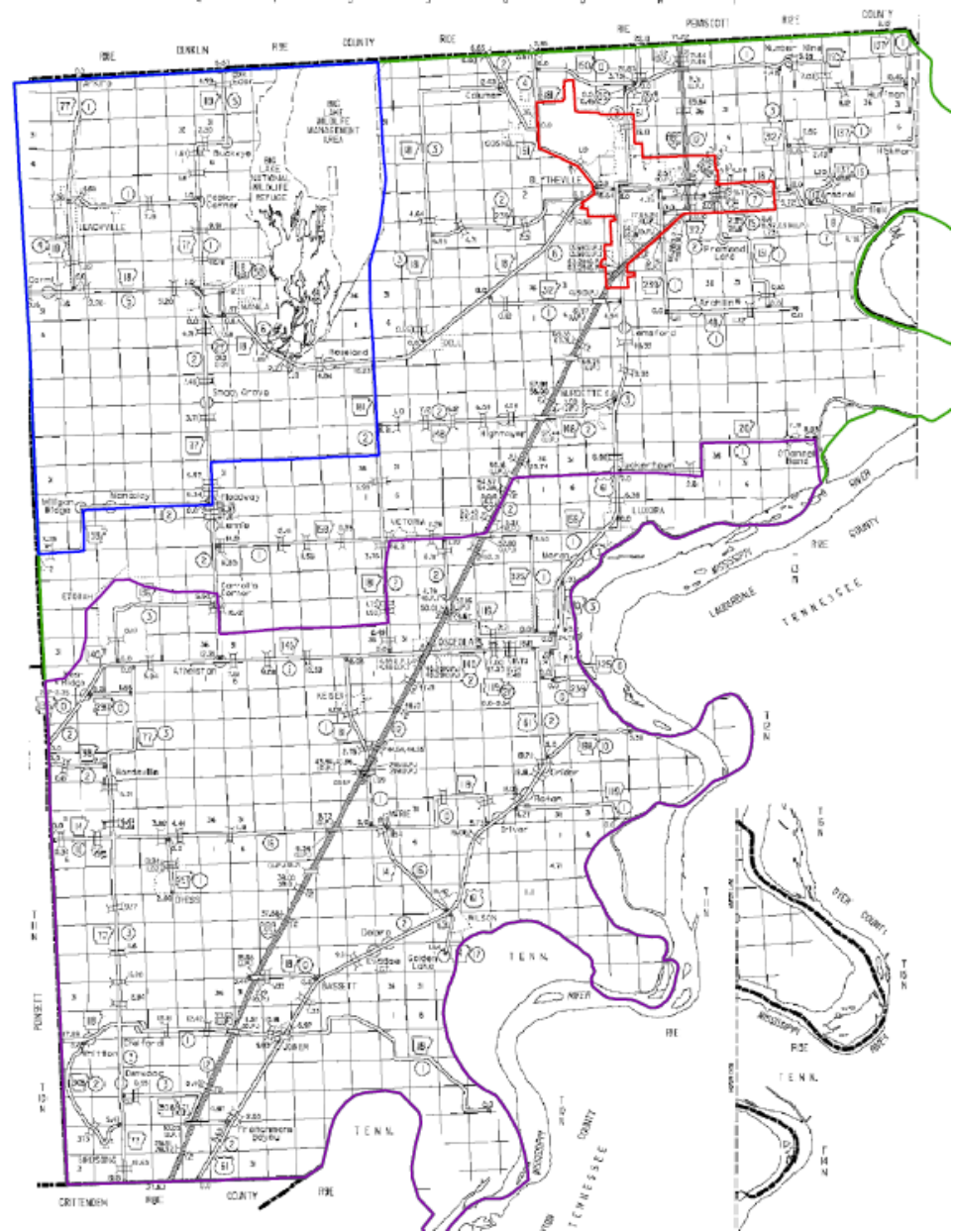
ARKANSAS
GIS OFFICE

Emergency Services

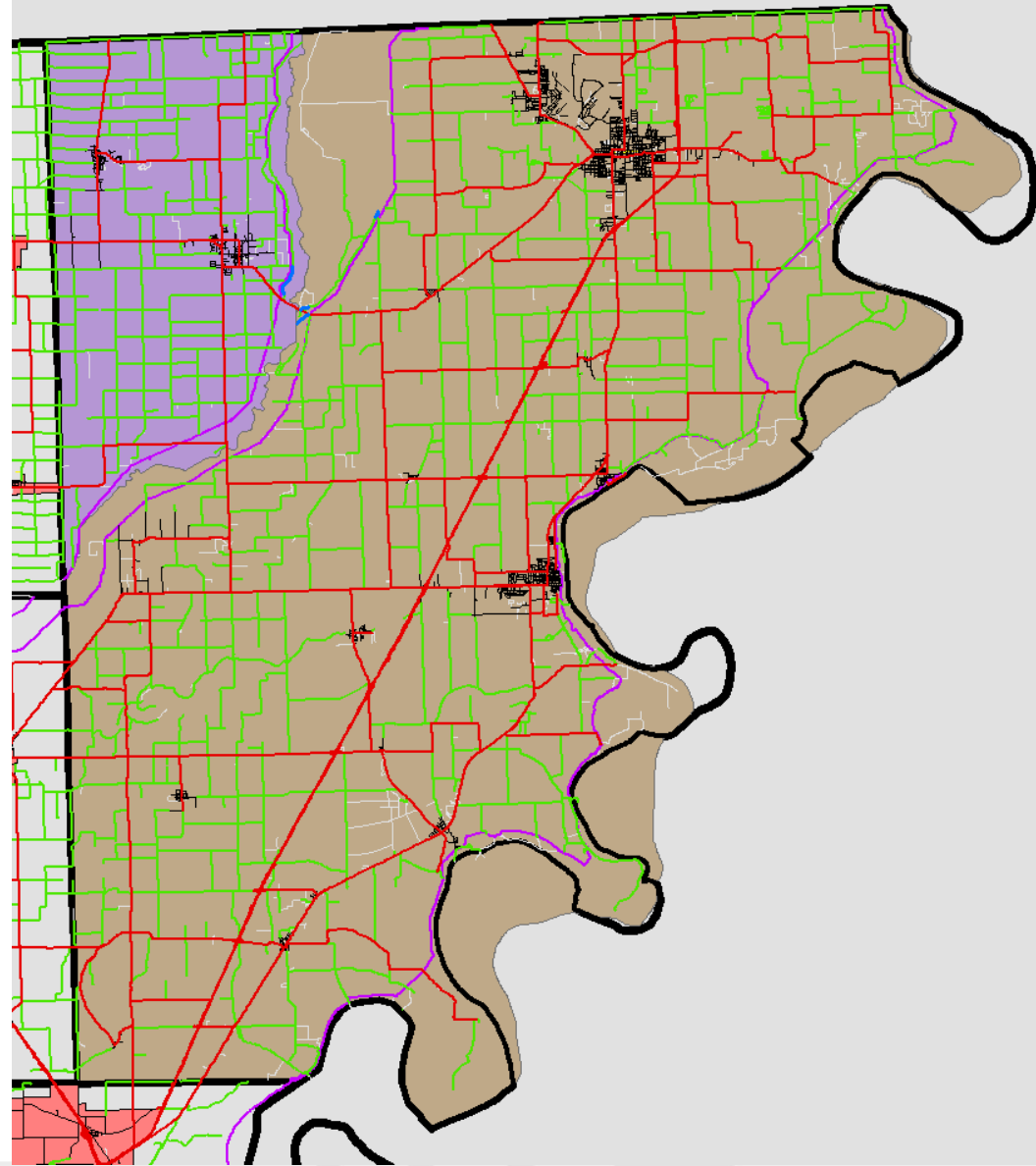


Boundaries





ARKANSAS
GIS OFFICE

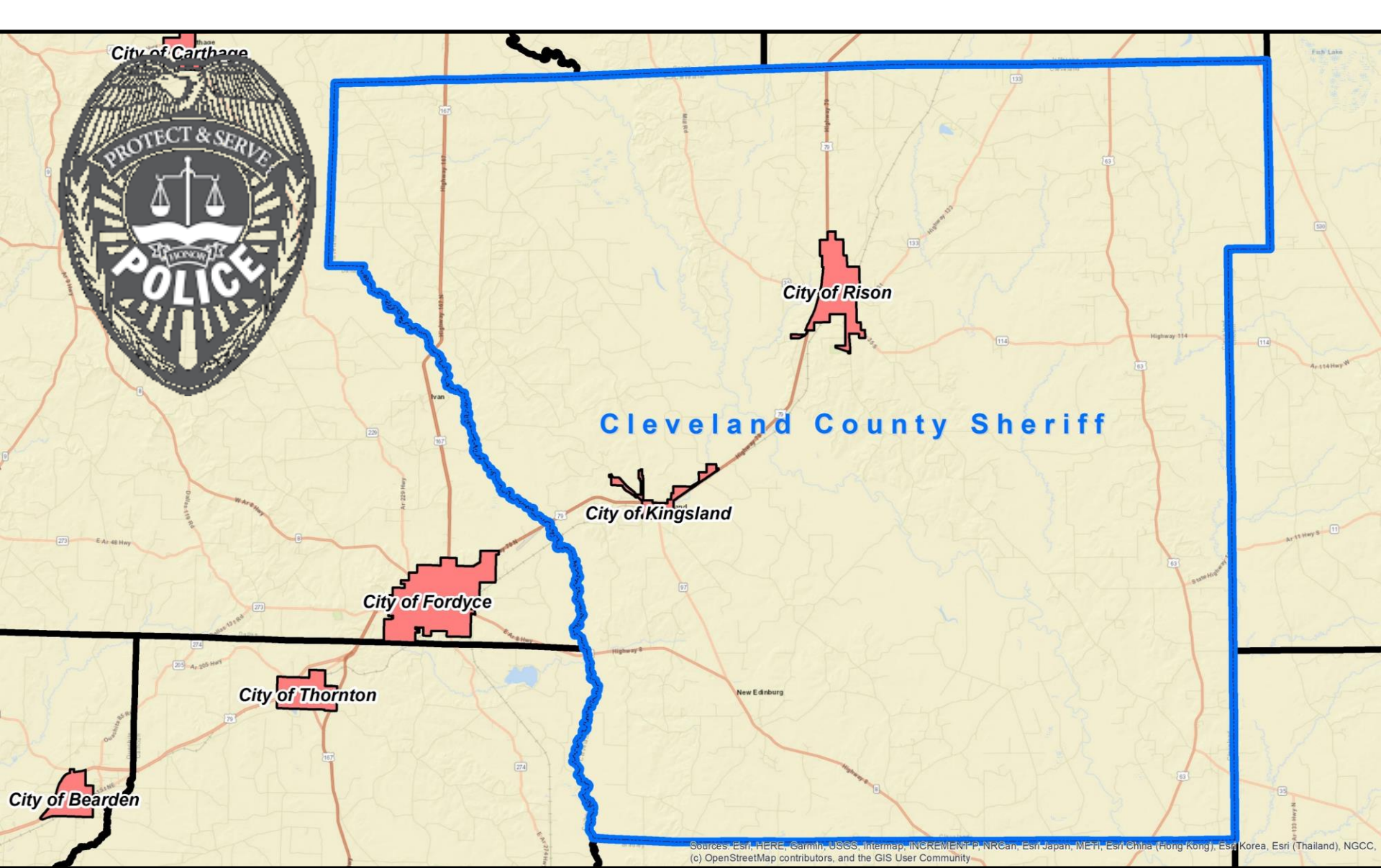


ARKANSAS
GIS OFFICE



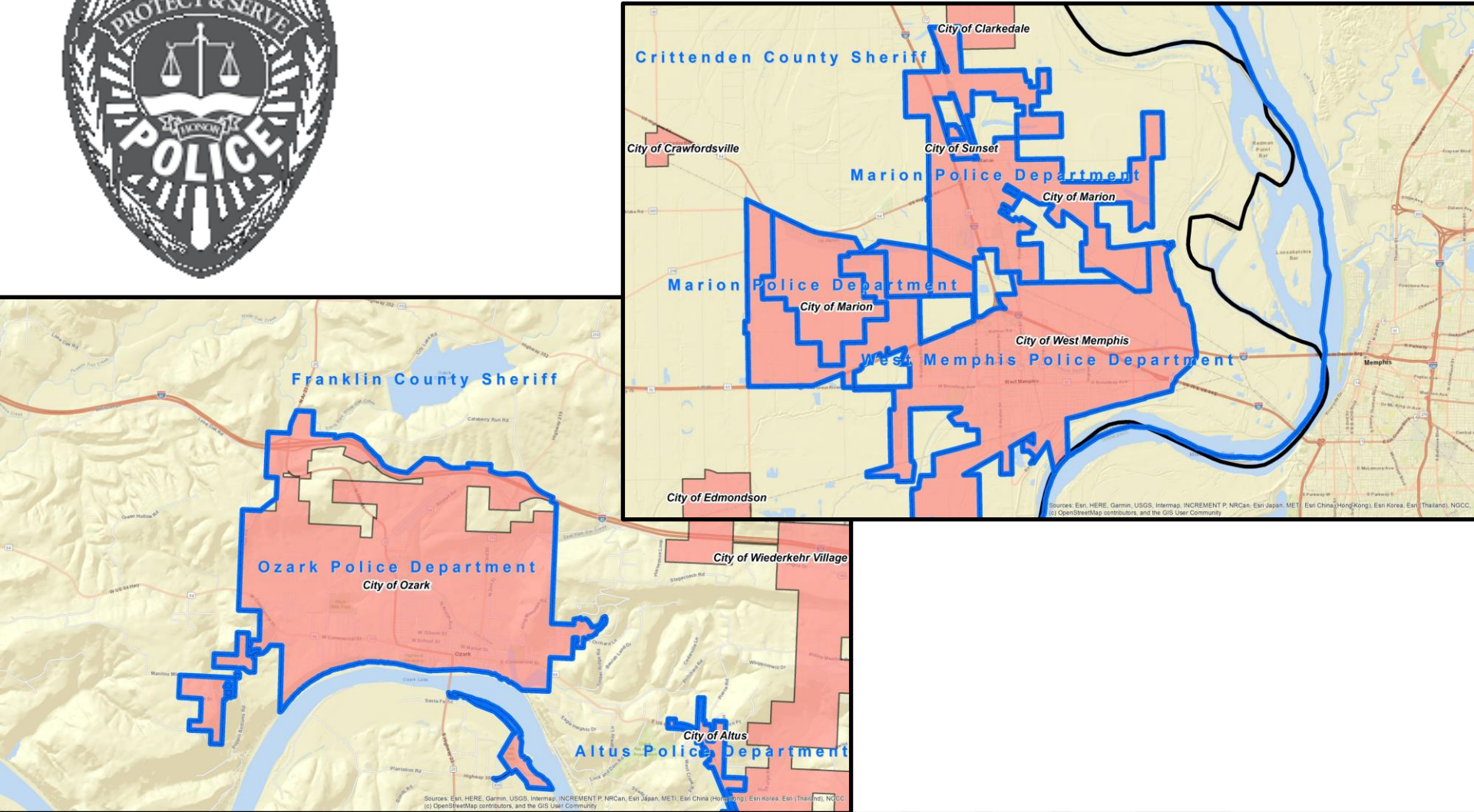
Don't make assumptions...

Cleburne County Township Two Constable	1307 W Sugraloaf		Heber Spri	AR
Cleburne County Position 1 Constable	1307 Prim Rd		Prim	AR
Cleveland County Sheriff's Office	P.O. Box 427	20 Magnolia St	Rison	AR
Rison Police Department				AR
District Court	P.O. Box 606	20 Magnolia Rd.	Rison	AR
Arkansas Community Correction	P.O. Box 689	106 S Charlotte	Fordyce	AR
Kingsland Police Department	P.O. Box 67	2nd Lark St	Kingsland	AR
Whiteville Township Constable				AR
Miller Township Constable	8201 HWY 63		Rison	AR
Columbia County Sheriff's Office	P.O. Box 576	82 Columbia 300	Magnolia	AR

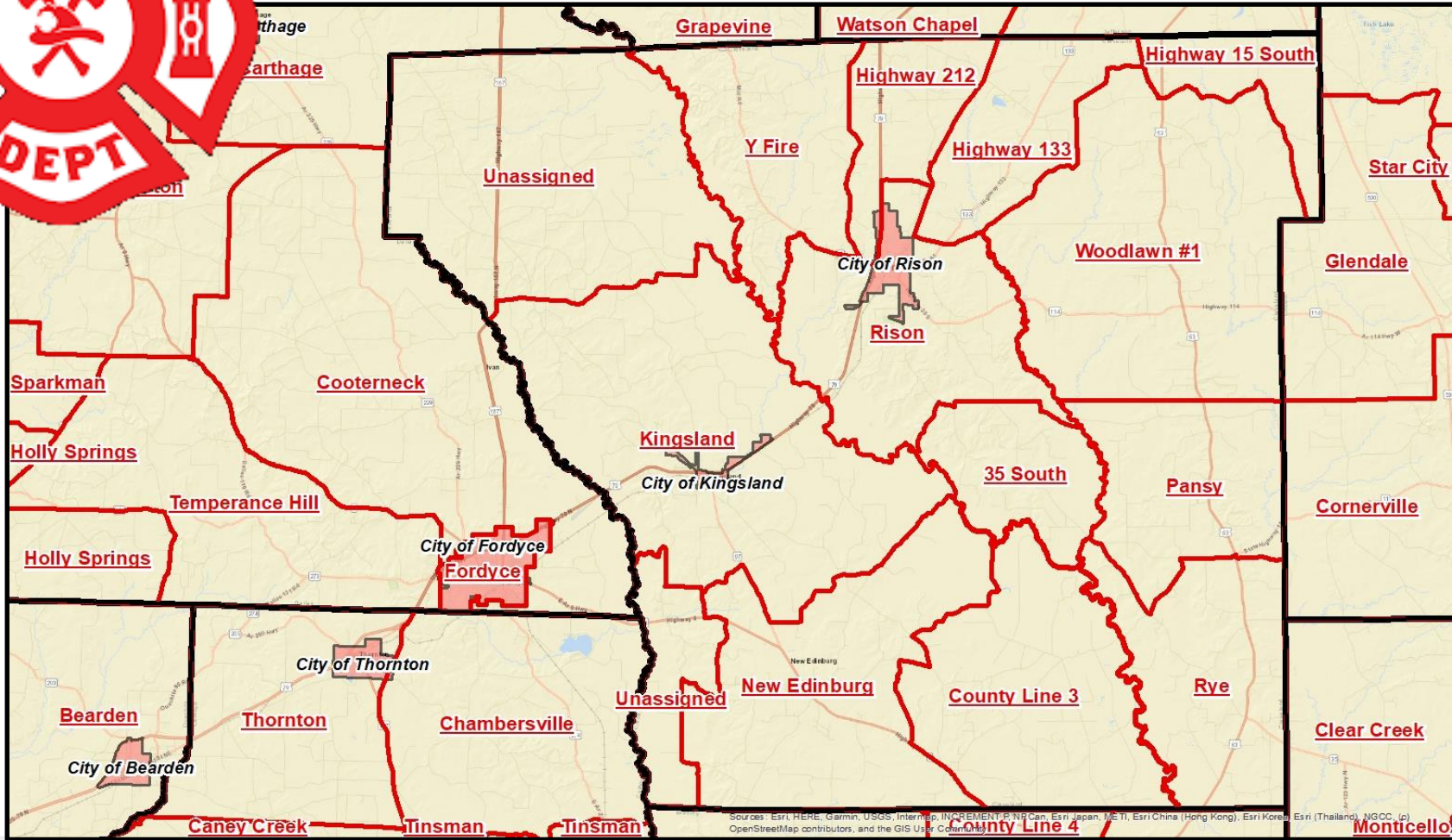


**ARKANSAS
GIS OFFICE**

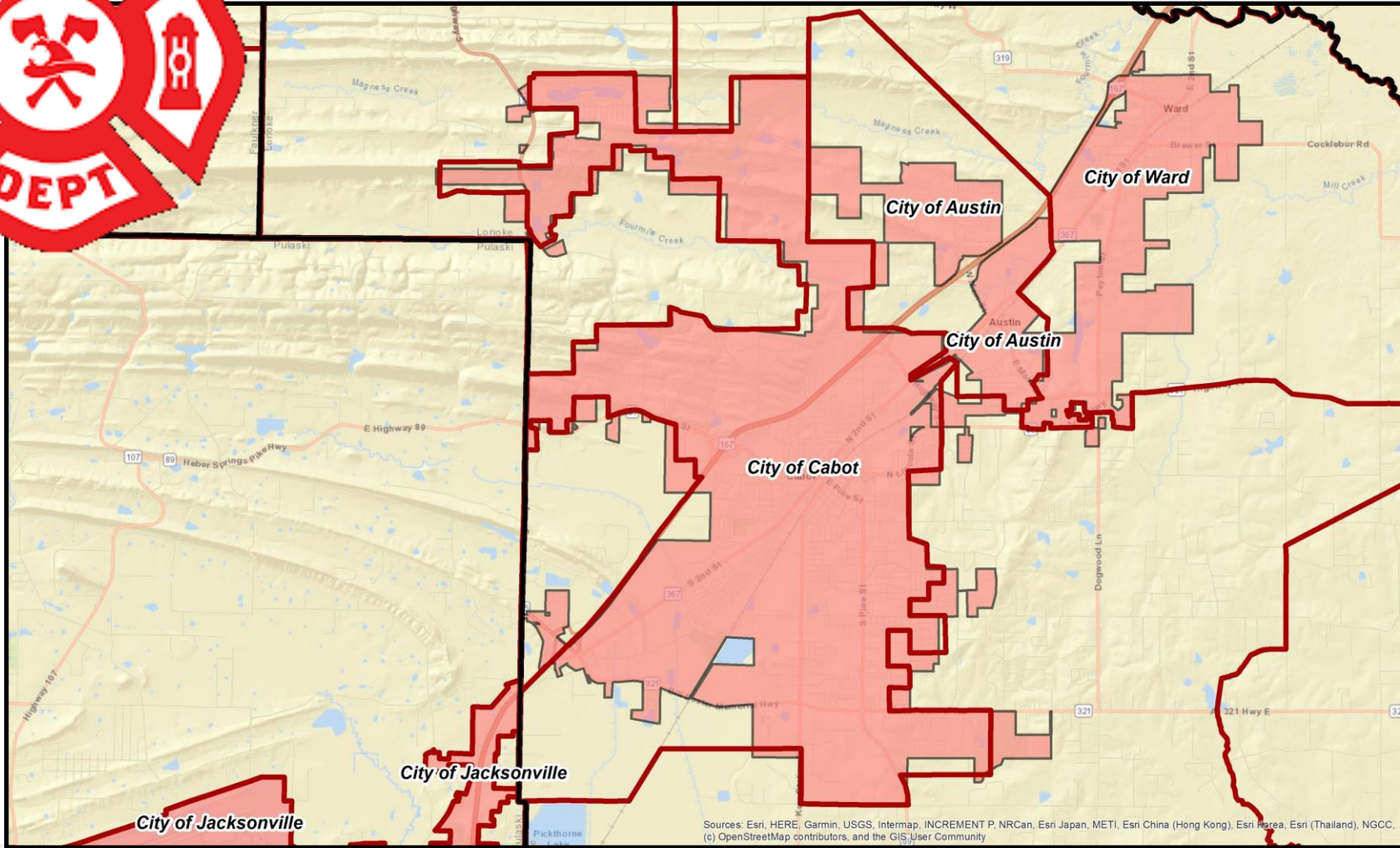
...and beware the enclaves.



Many, many rural fire districts



Municipal discrepancies...



Sources: Esri, HERE, Garmin, USGS, Intermap, INCREMENT P, NRCan, Esri Japan, METI, Esri China (Hong Kong), Esri Korea, Esri (Thailand), NGCC, (c) OpenStreetMap contributors, and the GIS User Community



Where we are now?



- Nearing Phase 1 completion for ESZs
- Implementation of recommendations from QA/QC analysis
- Preparing for deep dive into MSAG/ALI/RCL reconciliation with PSAPs
- Hoping to keep our sanity ;-)



Thank you!

Jonathan Duran, Deputy Director
Arkansas GIS Office

jonathan.duran@arkansas.gov

501-682-4432



ARKANSAS
GIS OFFICE