



Geographic Update Partnership Software (GUPS) Web Supporting Geographic Partnership Programs

NSGIC Annual Meeting
September 26, 2024

Maria Panaccione
Geography Division
U.S. Census Bureau

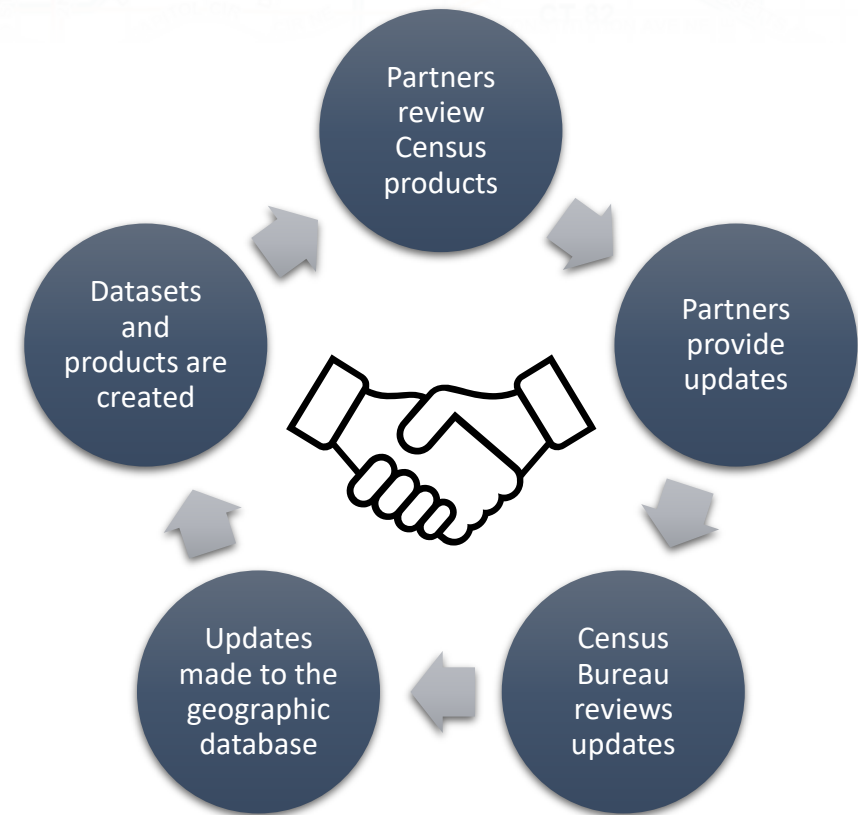


Agenda

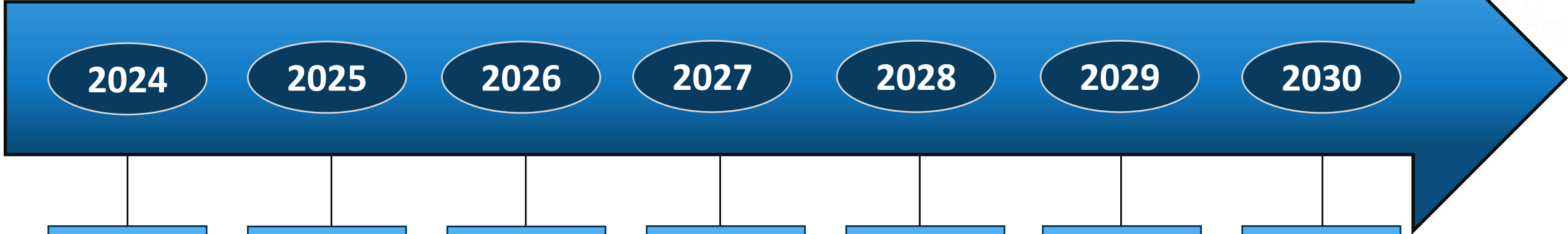
- Geographic Partnership Programs
- Geographic Update Partnership Software (GUPS)
- GUPS Web Overview
- GUPS Web Demo

Geographic Partnership Programs

- The U.S. Census Bureau maintains and updates nationwide datasets for:
 - Legal Boundaries
 - Statistical Boundaries
 - Administrative Boundaries
 - Addresses



Geographic Partnership Programs Timeline



BAS, SDRP

BAS, SDRP

BAS, SDRP

BAS, SDRP

BAS, SDRP

BAS, SDRP

BAS, SDRP

LUCA

LUCA, PSAP

LUCA, NC, PSAP

BVP, PSAP

BAS = Boundary and Annexation Survey
SDRP = School District Review Program
LUCA = Local Update of Census Addresses Operation
PSAP = Participant Statistical Areas Program
NC = New Construction Program
BVP = Boundary Validation Program

Geographic Update Partnership Software (GUPS)

- GUPS is an open source software that provides participants the ability to update geospatial data and attributes for Census Bureau geographic partnership programs.
- GUPS provides tools for a user to load, display, and edit geospatial data.
- GUPS consists of a core system with 12 individual program interfaces.



Introduction of GUPS Web

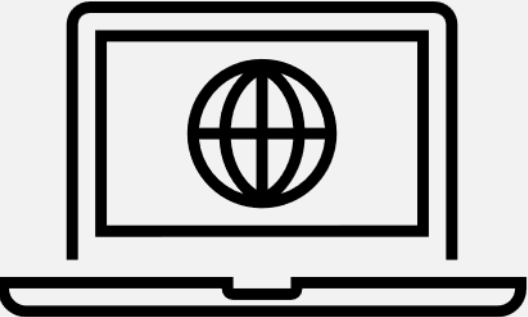
- Real-time collaboration with colleagues on submissions.
- Materials are available online.
- More processing power.
- Utilization of automated spatial analysis tools.
- Integration with Partner Portal.
- Multiple editing methods for creating updates.

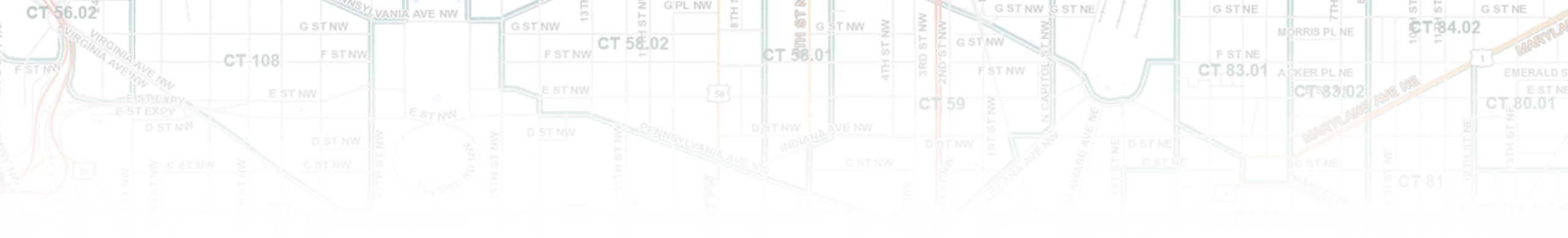
The screenshot displays the GUPS Web interface. On the left is a navigation menu with icons for View Tools, Imagery Tools, Selection Tools, Edit Tools, Review Tools, and Boundary Review. The main area shows a map with several colored polygons (yellow, green, purple) representing different geographic areas. A 'Boundary Review' panel is open at the bottom, showing a table of 'Incorporated Place Changes'.

Feature ID	Review	Place FIPS	Name	Change Type	Effective Date	Auth Type	Document Number	Attachment	Comments	Census Feedback	Relate	Area (acres)
1	-	15800	Corvallis city B	B	-	-	-	-	-	-	OUT	123.22787131
2	-	15800	Corvallis city B	B	-	-	-	-	-	-	OUT	46.678915272



GUPS Web Demo





Thank You

Questions?

geo.outreach@census.gov

