

# AI in ArcGIS

Ismael Chivite - Sr. Principal Product Manager

Prepared for NSGIC on November 18, 2025

Empower people and organizations to leverage the geographic approach...

...to understand our world and improve decision making

Esri makes the world's most powerful GIS enterprise-grade technology: ArcGIS

# The Innovation Journey of ArcGIS . . .

Embracing Modern Technology Trends

Mini computers



Networks



Workstations

Personal computers



Internet



Mobile computing

Windows (GUI)



Cloud computing

GPUs



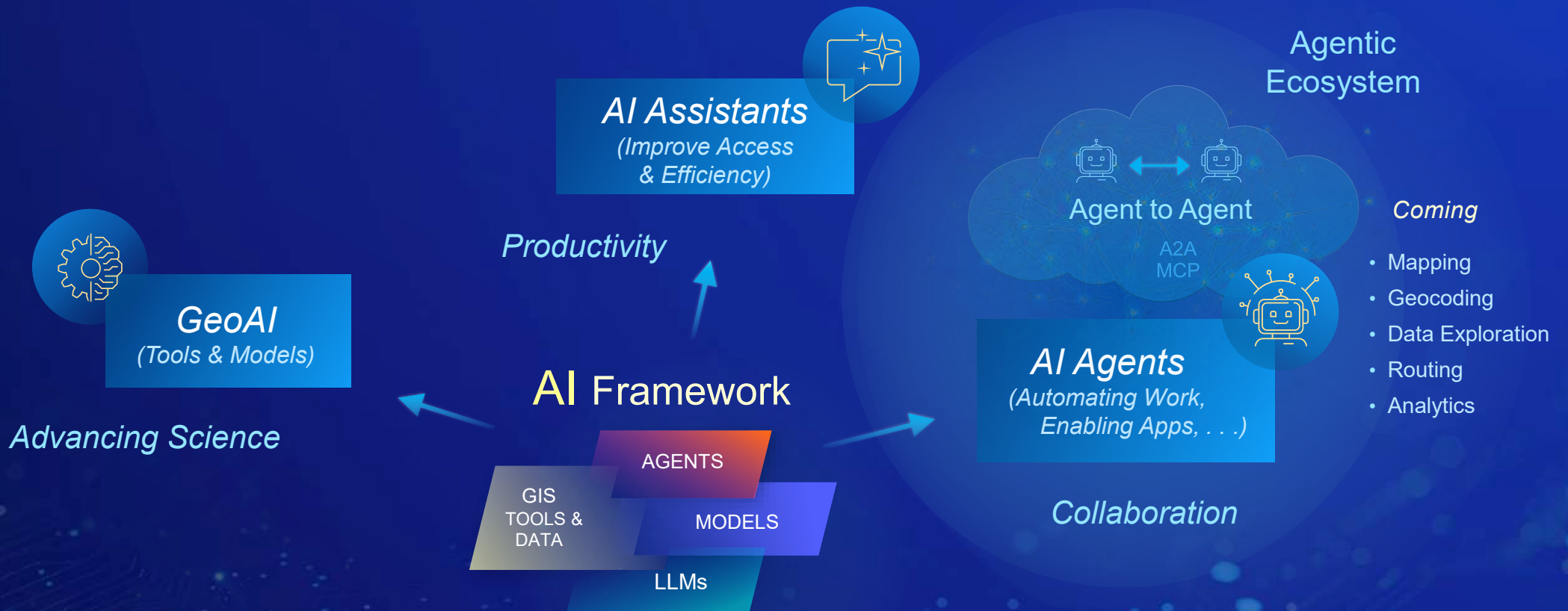
Artificial Intelligence...

*Advancing geospatial science and technology...*



# ArcGIS Is Being Enhanced with AI

Integrating the Power of GIS and AI across organizations and workflows



# GeoAI in ArcGIS

AI models and tools for geospatial data engineering and analysis



## • *Extracting data*

- Computer vision on Imagery, 3D, and Video data
- Natural Language Processing on Unstructured Text data

## • *Analyzing data*

- Machine learning and deep learning on Vector, Tabular, and Time series data

*AI for extracting and analyzing geospatial data*



# Pretrained GeoAI Models

Included with ArcGIS

- Cars
- License Plate Blurring
- Parking Lots
- Parking Spots
- Humans
- Crowd Counting
- Face Blurring
- Land Cover
- Buildings
- Roads
- Parcels
- Ag Fields
- Swimming Pools
- Well Pads
- Oil Spills
- Palm Trees
- Power Lines
- Transmission Towers
- Insulator Defects
- Wind Turbines
- Solar Arrays
- Solar Panels

- Ships
- Shipwrecks
- Oil Spills
- Palm Trees
- Trees
- Plant Leaf Disease
- Common Object Detection
- Text Parsing from Photo
- Object Tracking
- Segment Anything Model (SAM)
- **CLIP Zero Shot Classifier**
- **Text SAM**
- **Prithvi (Crops, Burn Scars, Floods)**
- Building Point Classification
- Wildfire Delineation
- Oil Tanks
- Pylons
- Optical Character Recognition
- Cooling Towers
- Agricultural field boundaries
- Cloud Mask Generation
- Ship Detection
- Tree Segmentation
- Transmission H-Structure Detection

... and Many More

State & Local Government  
Public Safety  
Conservation  
Transportation  
Natural Resources  
Commercial Business  
National Security  
Insurance  
Utilities

Elephant Detection



Road Extraction (Global)



Wind Turbine Detection

Cloud Mask Generation

Building Footprints



Parking Spot Detection



Solar Park Classification



Land-Cover Classification



# Analyzing spatial data

Clustering, Prediction, Forecasting

## Highlights

- Fairness Metrics & Bias Mitigation
- Multi-modal Input (Text And Image as Input for AutoML)
- Multi-step forecasting
- LSTM & Transformer models
- Model explainability



Multi-modal AutoML



Prediction

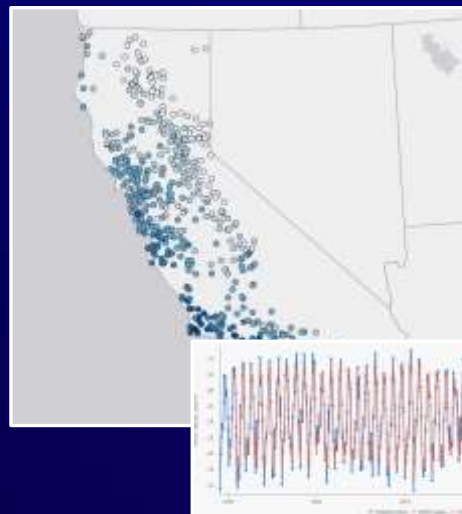


Classification

Clustering



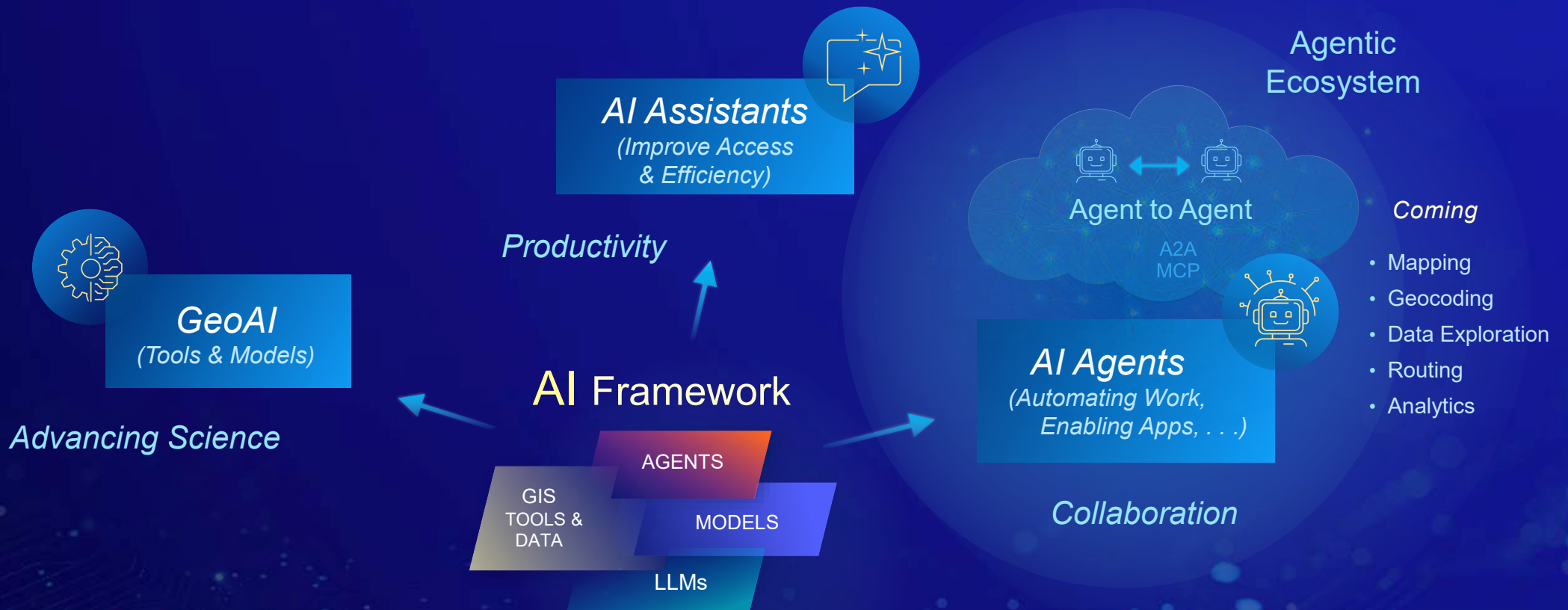
Time Series Forecasting



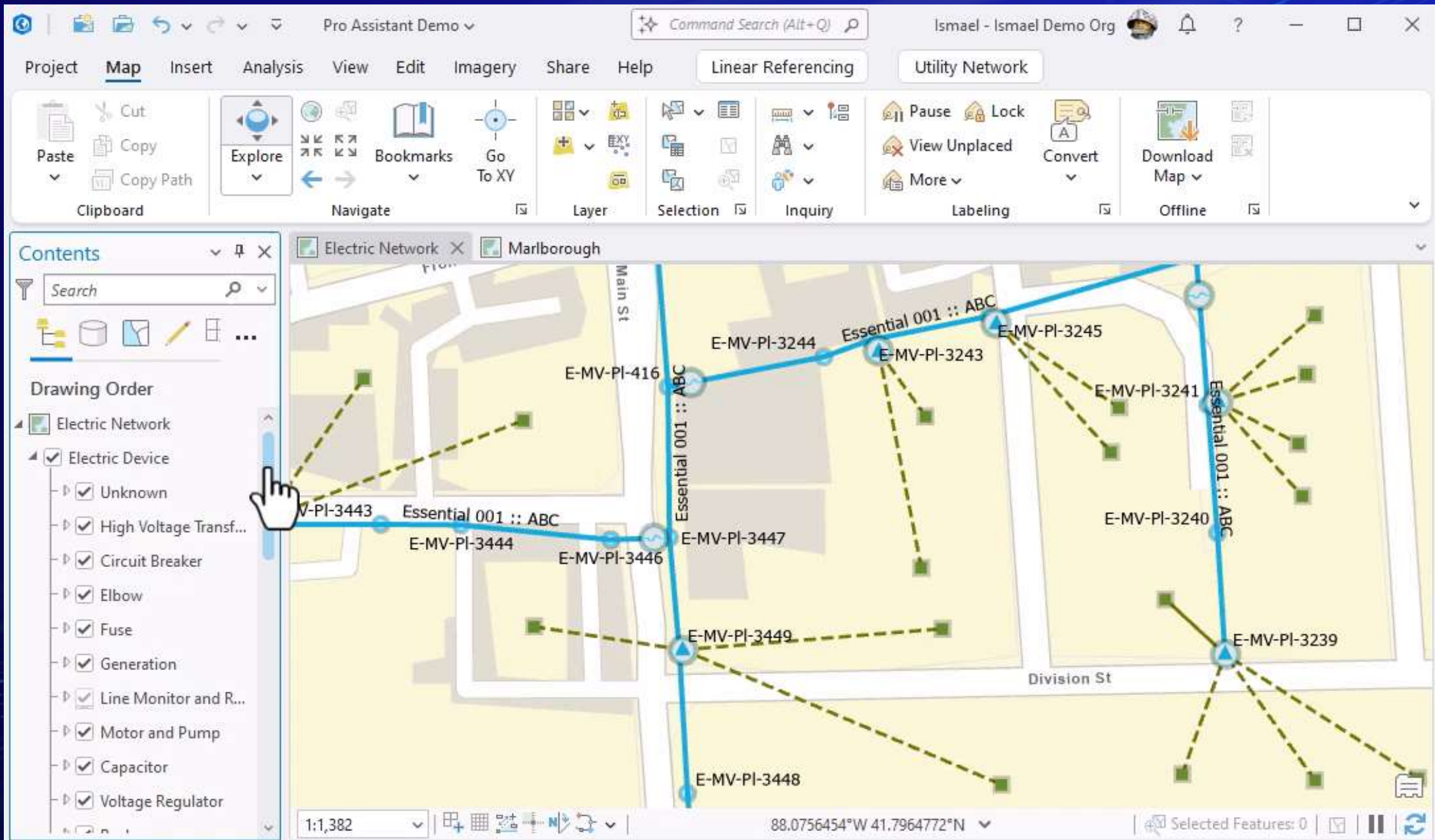
GeoAI Toolbox

# ArcGIS Is Being Enhanced with AI

Integrating the Power of GIS and AI across organizations and workflows





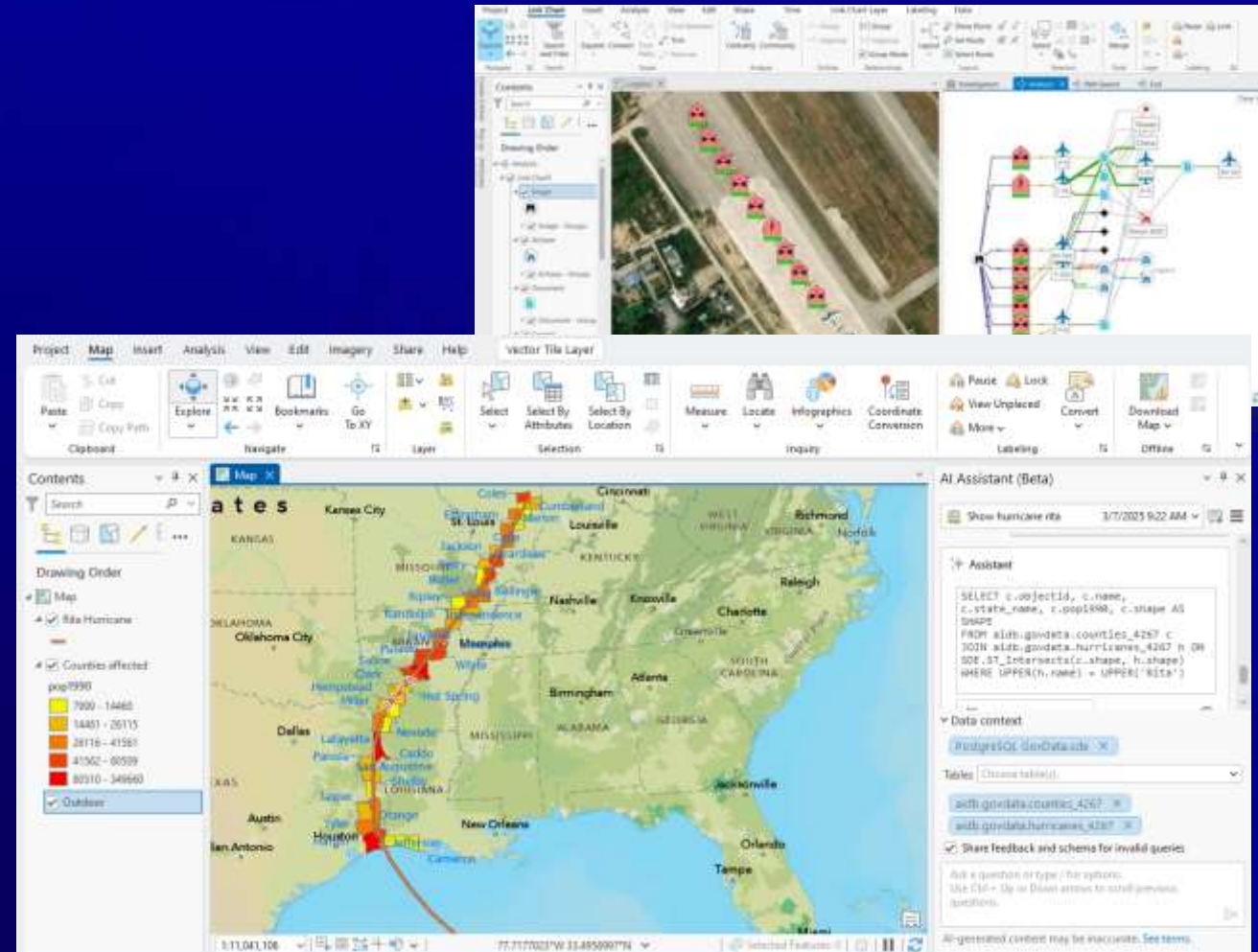


# ArcGIS Pro assistant (private beta)

An in-app assistant to help you streamline everyday tasks



- Use natural language to:
  - Explore ArcGIS Pro documentation
  - Generate Query Layer SQL expressions
  - Generate Knowledge Graph Cypher queries
  - Trigger common actions in ArcGIS Pro
- New at 3.6\*:
  - More actions
  - ArcPy code generation
  - ~~Enterprise 12.0 support~~
- Complete this [form](#) to request access



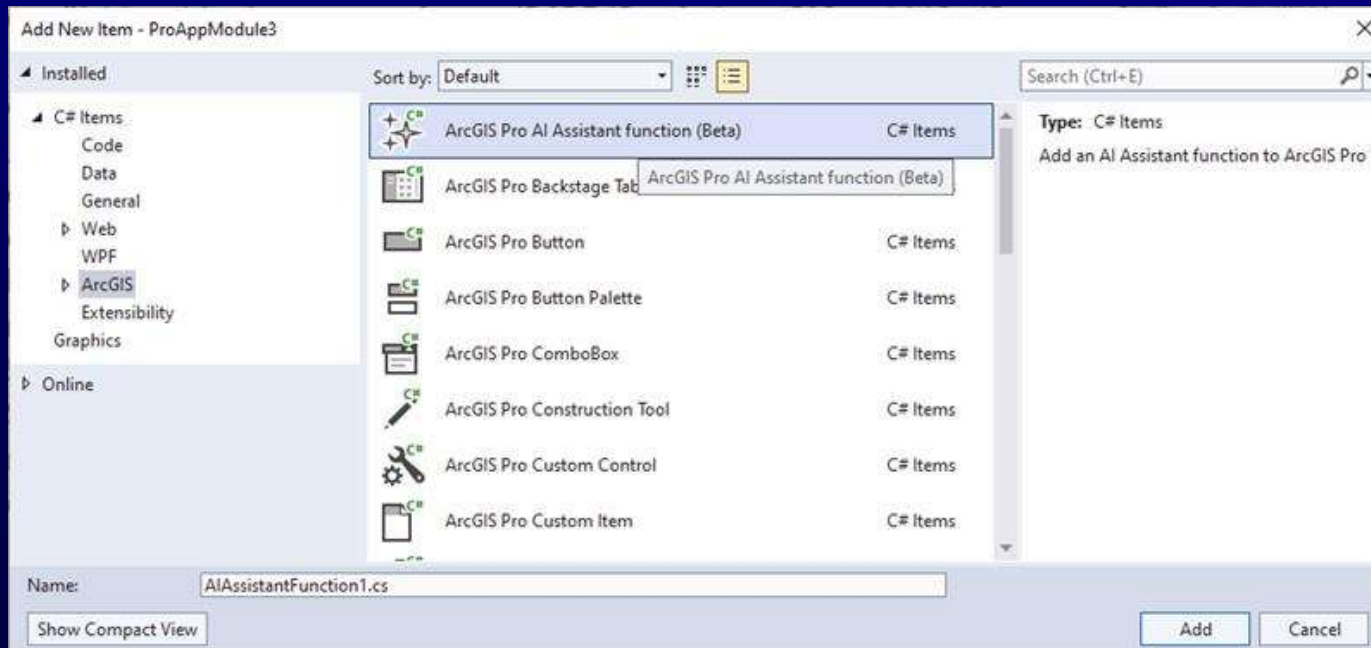
\* ArcGIS Pro 3.6 assistant available December 1<sup>st</sup> 2025 for Early Adopters



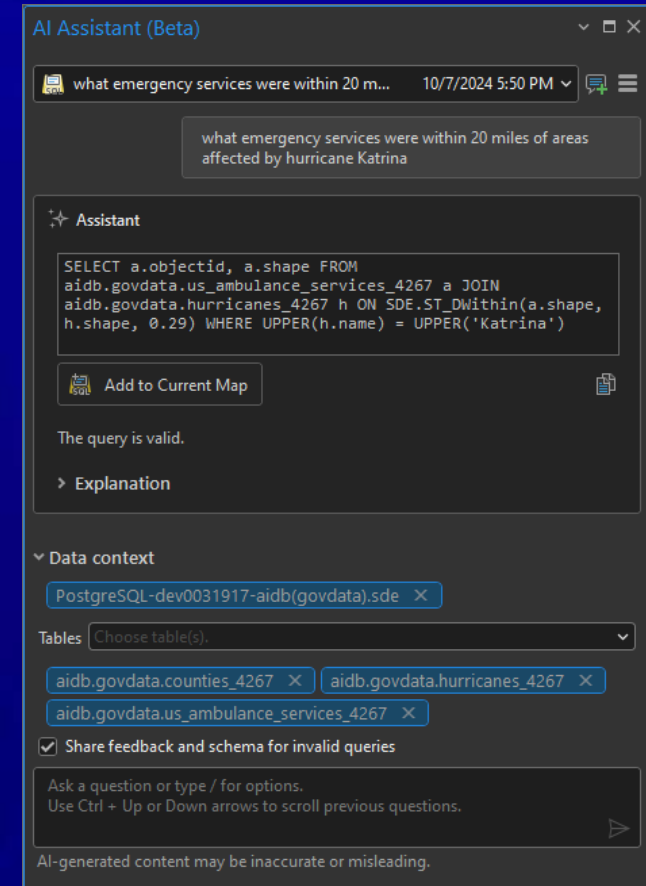
# ArcGIS Pro Assistant Extensibility

## Custom AI Function Template - 3.5 Beta

- Write (.NET) and register custom AI functions with the Pro AI assistant
- Registered skills are used by the AI assistant to execute user requests
- SDK Resources – Samples, Snippets, ProGuides



AI Function Template



ArcGIS Pro Assistant

# Item details assistant (private beta)

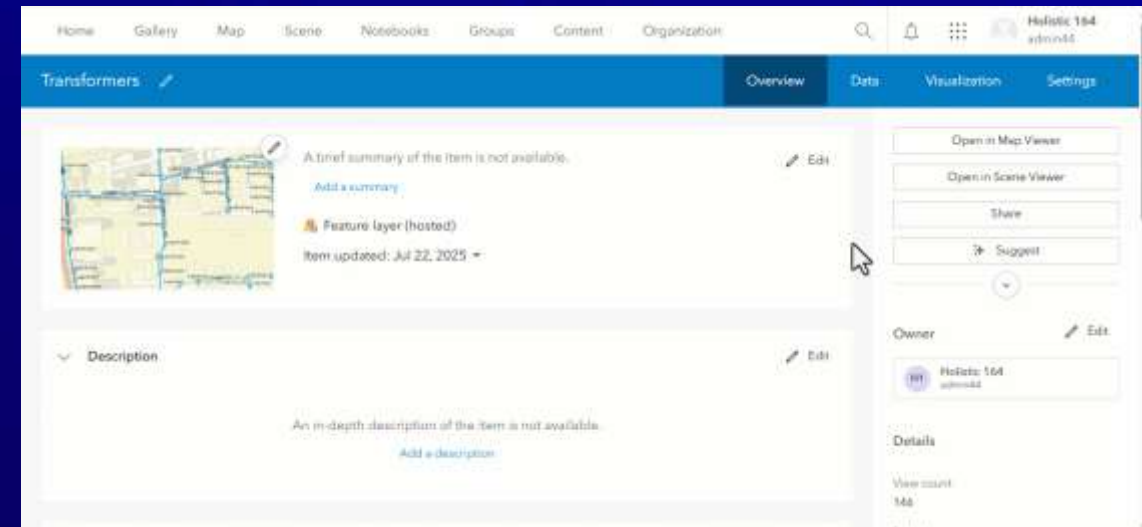
Document your ArcGIS items for discovery and effective use

- Item metadata is key for discoverability and effective use by AI agents (and people!)
- Suggestions to help you document ArcGIS items

- Hosted Feature Layers
  - Title, Summary, Description
  - Fields (Display name/alias, Description, Value Type)

- Schedule:

- ArcGIS Online R3 2025 (Private Beta)
- ArcGIS Enterprise 12.0 (Beta)
- ArcGIS Online R1 2026 (Beta)



- [Complete this form](#) to request access to private beta in ArcGIS Online



[Home](#)[Gallery](#)[Map](#)[Scene](#)[Notebooks](#)[Groups](#)[Content](#)[Organization](#)

Holistic 164  
admin44

[Transformers](#) [Overview](#)[Data](#)[Visualization](#)[Settings](#)

A brief summary of the item is not available.

[Add a summary](#)

Feature layer (hosted)

Item updated: Jul 22, 2025 ▼

Edit

▼ Description

An in-depth description of the item is not available.

[Add a description](#)

Edit

[Open in Map Viewer](#)[Open in Scene Viewer](#)[Share](#)

Suggest



Owner

Edit

H1

Holistic 164  
admin44

Details

View count

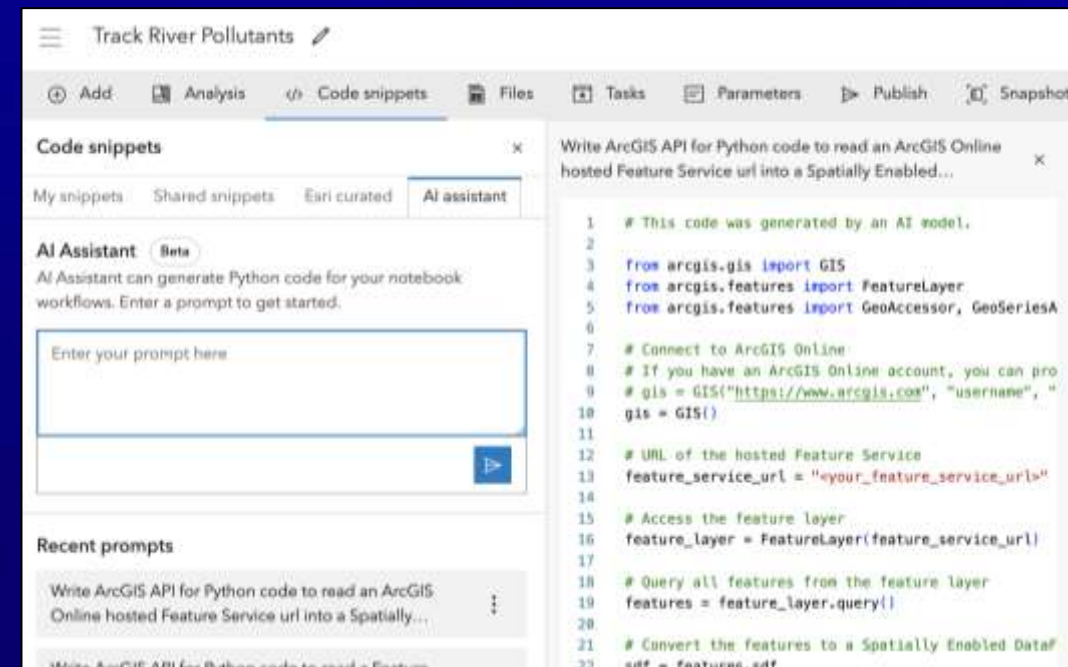
146

Source

# ArcGIS Notebook assistant (beta)

For task automation, data engineering and analysis

- Generates, fixes and explains Python code
- Available in:
  - Standard (for admin tasks and light data engineering)
  - Advanced (for advanced analytics, and large data engineering)
- Optimized for latest version of the Python API
- Beta release planned ArcGIS Online 26.R1



Python assistant in Notebooks



ArcGIS Notebooks

ArcGIS

Gemini

← → ↻ 🔍

https://notebooks.mapsdevext.arcgis.com/home/notebook/notebook.html?rid=arcgis-notebook-python-standard:11.5.0.56755

☆ 📄 ⬇️ 👤 ⋮

☰ Untitled notebook

🔔 ⋮ 👤 nbuser50 esri  
nbuser50

📄 Save as

⊕ Add 📄 Analysis </> Code snippets 📄 Files

File Edit View Run Kernel Settings Help

+ ✂️ 📄 📄 ▶️ ■ ↻ ⏩ Markdown ▾

⚙️ Python 3 (ipykernel) ○ ☰

▼ Welcome to your notebook. 📄 ⬆️ ⬇️ 📄 📄 🗑️

Run this cell to connect to your GIS and get started:

[ ]: `from arcgis.gis import GIS  
gis = GIS("home")`

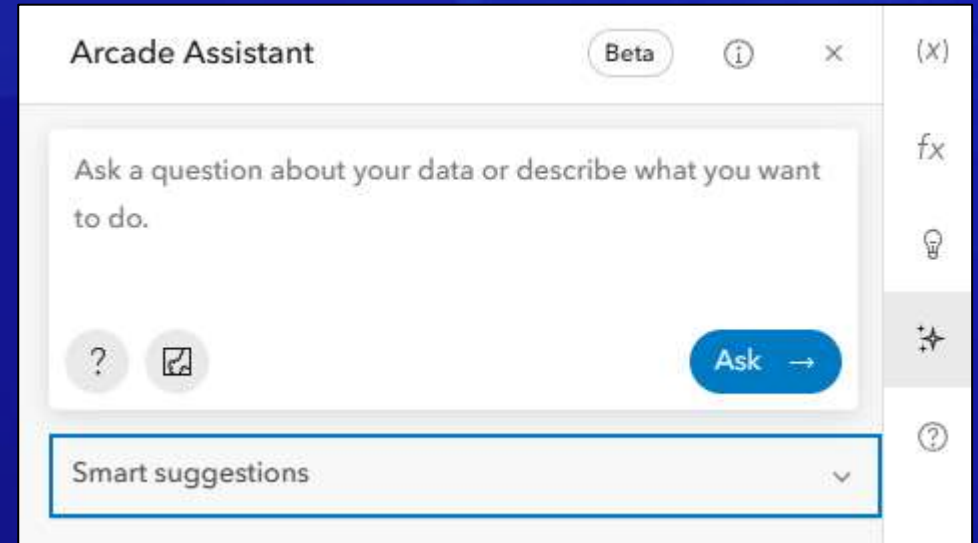
Now you are ready to start!

[ ]:

# Arcade Assistant (beta)

Your helper to write Arcade expressions

- Initially added to Map Viewer (June 2025)
  - [Announcement in ArcGIS Blog](#)
- Now also available in
  - Scene Viewer
  - Field calculations in map viewer, home app and web editor
- Coming in 2026:
  - Field Maps Designer
  - Experience Builder
  - Dashboards
  - ArcGIS Pro





Water Sources Panama - Data

Panama Water Sources - Overview

+

←

→

↺

https://ismael.maps.arcgis.com/home/item.html?id=9b437abd56bd457585a4175e317432e3#data

☆

🔍

👤

⋮

Home

Gallery

Map

Scene

Notebooks

Groups


Content

Organization

🔍

🔔

⋮

 **Ismael Chivite**  
Ismael

Water Sources Panama

Overview

Data

Visualization

Usage

Settings

Table

Editing is disabled but you have privileges to edit this layer.

Fields

Layer: Water\_Sources\_Panama

Filter

Total: 3753

Data updated: November 3, 2025 at 9:18 AM

Column visibility

+

Add field

Update data

Calculate field

	Unique ID	Source	Use	Elevation	Depth	Province	District	SubDistrict
■	P000_0001	Well	Domestic	104.99	32.00	Bocas del Toro	Bocas del Toro	Bastime
■	P000_0002	Well	Domestic	242.78	74.00	Bocas del Toro	Bocas del Toro	Bastime
■	P000_0003	Well	Domestic	100.00	30.48	Bocas del Toro	Bocas del Toro	Bastime
■	P000_0021	Well	Tourism	50.00	15.24	Bocas del Toro	Bocas del Toro	Bocas c
■	P000_0023	Spring	Farming	0.00	0.00	Bocas del Toro	Bocas del Toro	Bocas c
■	P000_0024	Spring	Farming	0.00	0.00	Bocas del Toro	Bocas del Toro	Bocas c
■	P000_0026	Well	Domestic	0.00	0.00	Bocas del Toro	Bocas del Toro	Bocas c
■	P000_0027	Well	Domestic	0.00	0.00	Bocas del Toro	Bocas del Toro	Bocas c
■	P000_0028	Well	Domestic	83.01	25.30	Bocas del Toro	Bocas del Toro	Bocas c
■	P000_0029	Well	Domestic	74.02	22.56	Bocas del Toro	Bocas del Toro	Bocas c
■	P000_0030	Well	Domestic	62.01	18.90	Bocas del Toro	Bocas del Toro	Bocas c
■	P000_0031	Well	Domestic	70.01	21.34	Bocas del Toro	Bocas del Toro	Bocas c
■	P000_0032	Well	Domestic	177.17	54.00	Bocas del Toro	Bocas del Toro	Bocas c
■	P000_0033	Well	Domestic	124.67	38.00	Bocas del Toro	Bocas del Toro	Bocas c
■	P000_0034	Well	Domestic	127.95	39.00	Bocas del Toro	Bocas del Toro	Bocas c
■	P000_0035	Well	Domestic	144.36	44.00	Bocas del Toro	Bocas del Toro	Bocas c

Learn

<< Collapse

# ArcGIS Assistants (Online) | Release Plan \*



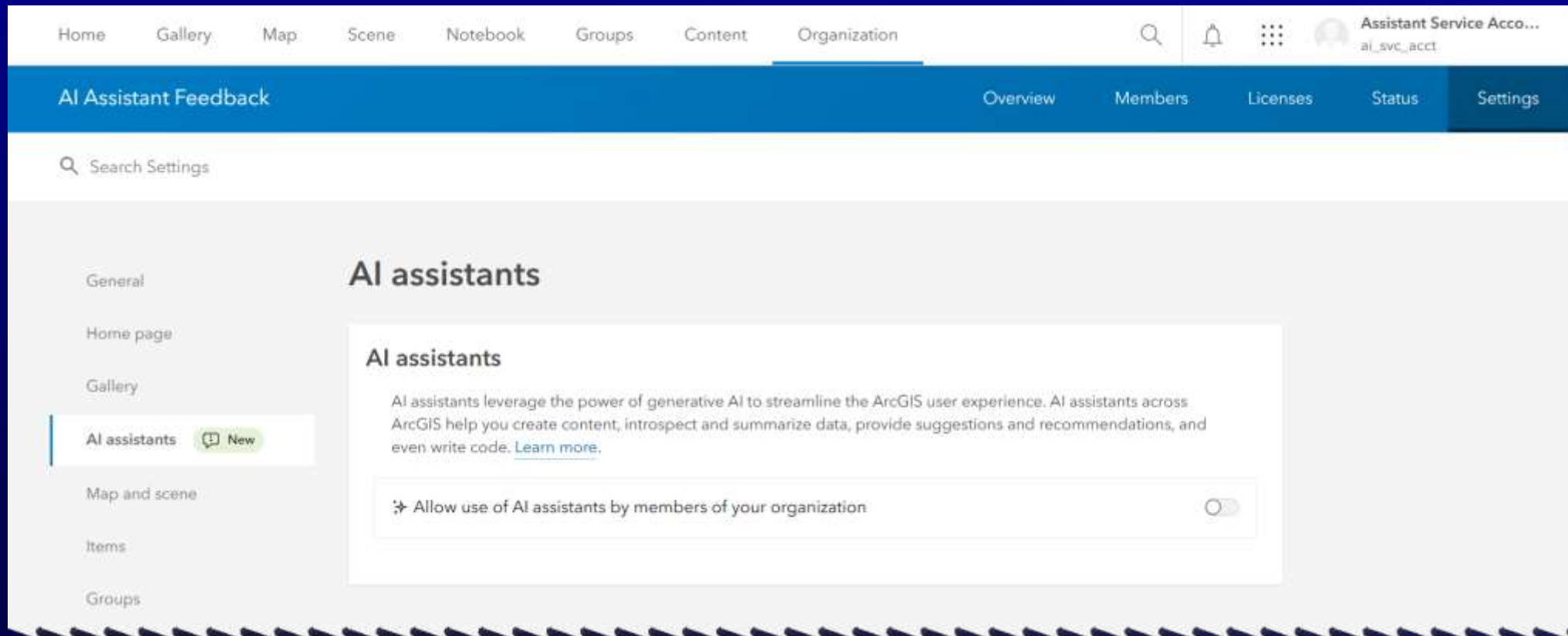
\* Tentative release plan. Subject to change.

# How to enable AI assistants in your organization



# AI assistant organization setting

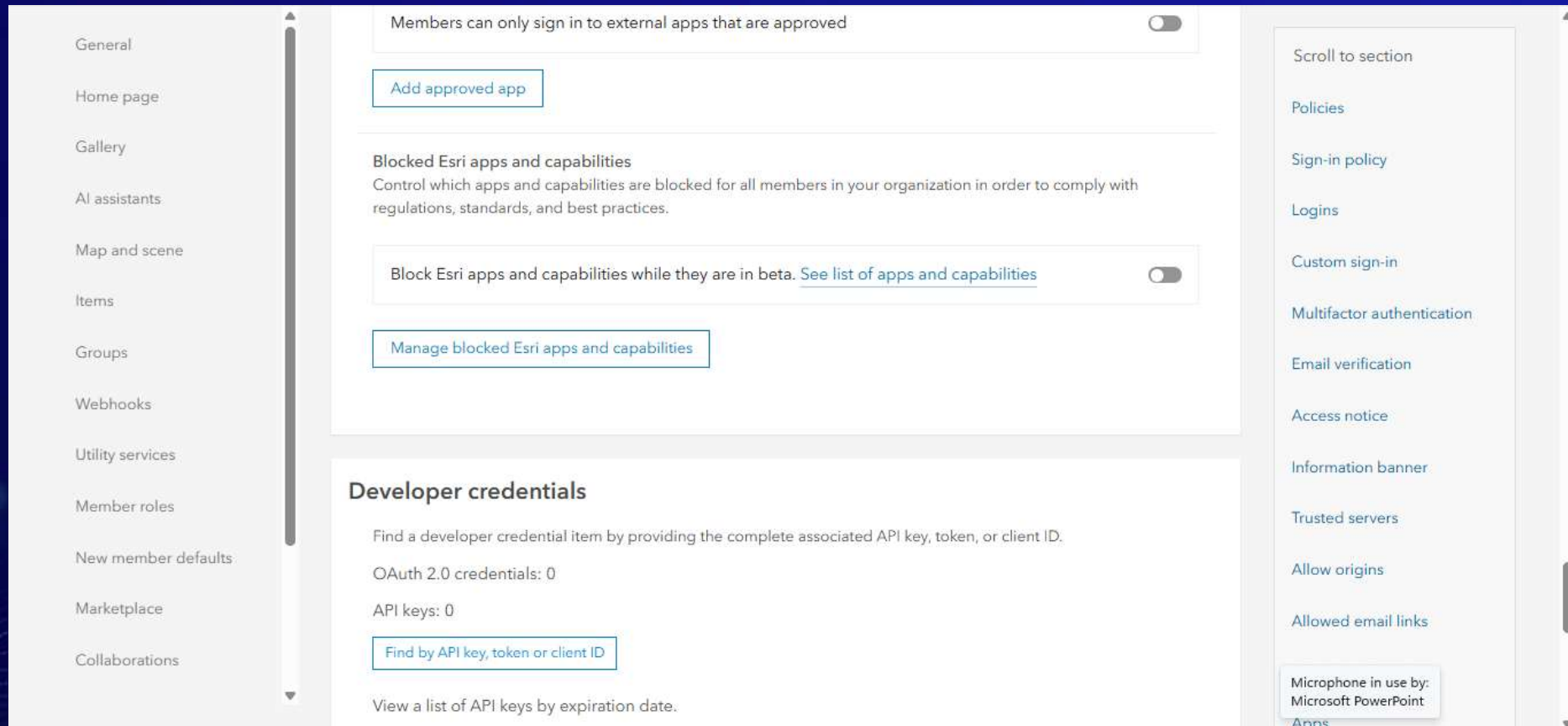
Opt-in workflow to enable use of generative AI in ArcGIS



Read [Configure AI assistants help topic](#) for details

# Beta blocker org setting

Allows administrators to block features in Beta

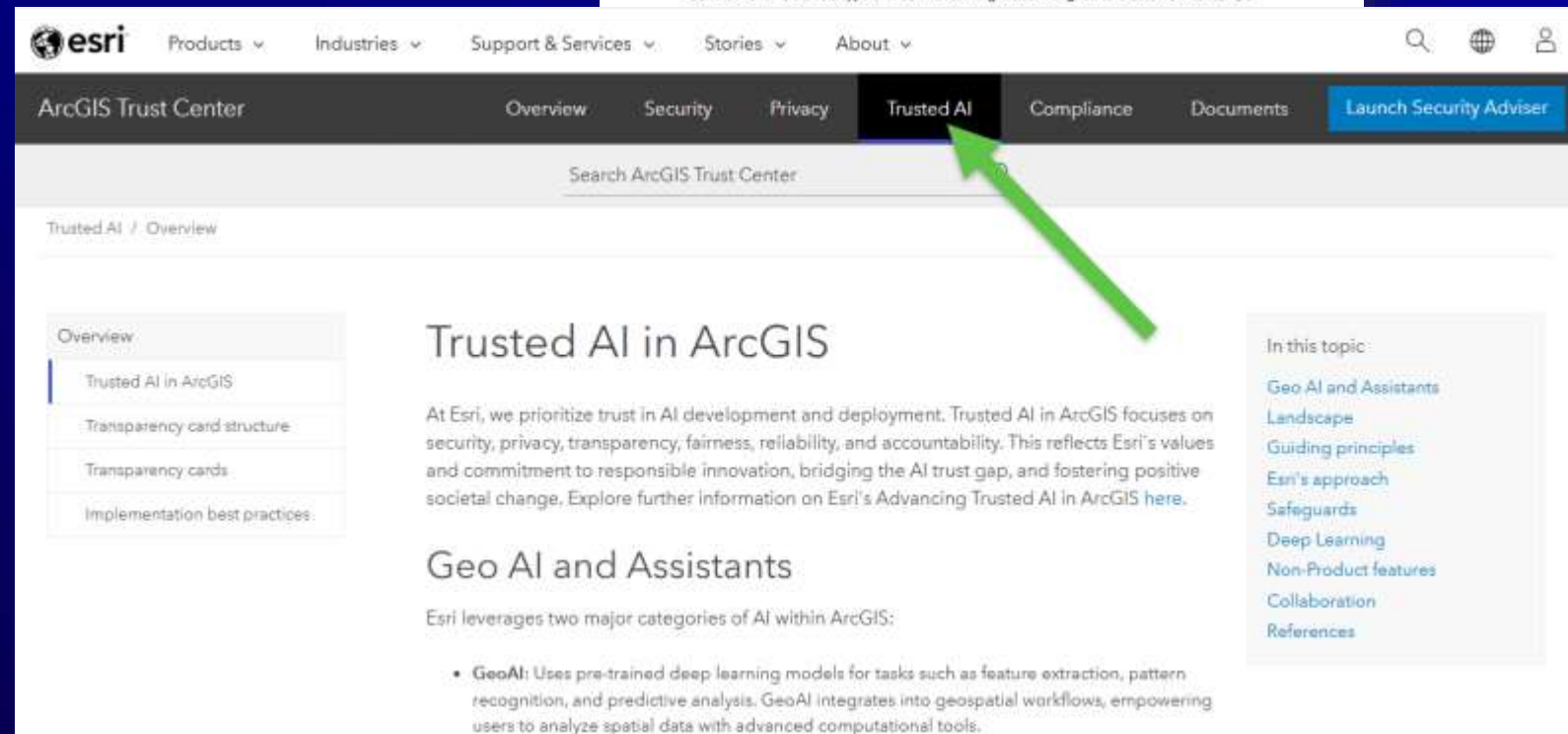


Read [Configure AI assistants help topic](#) for details

# Advancing Trusted AI in ArcGIS

New Trusted AI section in [trust.arcgis.com](https://trust.arcgis.com)

- [trust.arcgis.com](https://trust.arcgis.com)
- Outlines Esri's guiding principles for AI in ArcGIS
  - Security
  - Privacy
  - Transparency
  - Fairness
  - Reliability
  - Accountability

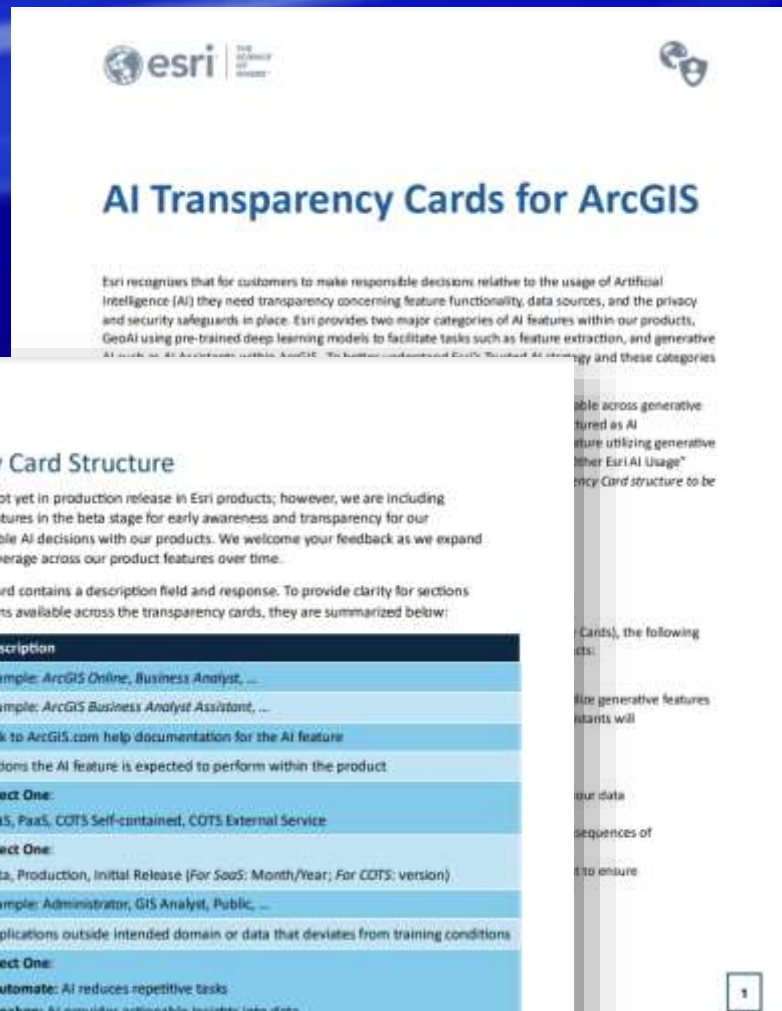




# Transparency Cards: Building Trust in AI

In-depth details about our AI features

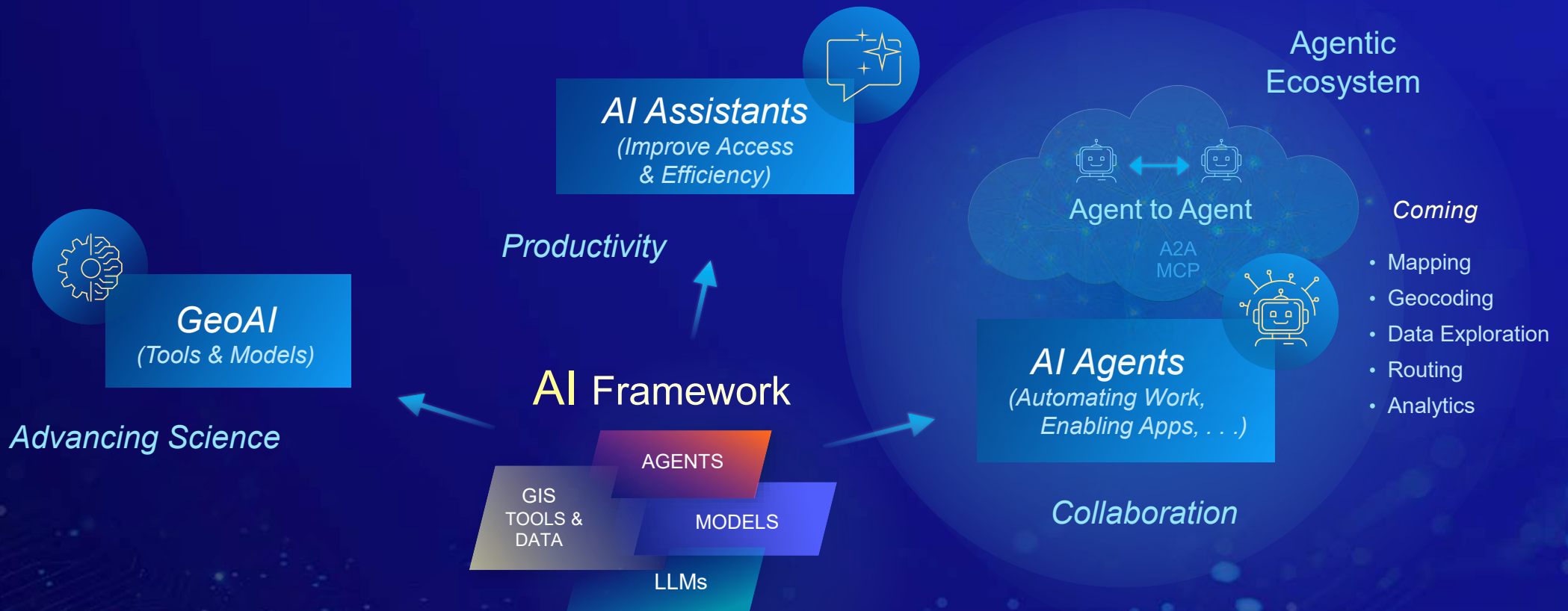
- **What Are Transparency Cards and Why Do They Matter?**
  - Short, structured summaries of our AI features
  - Empower you to make informed, decisions about using AI in ArcGIS
- **What They Include:**
  - Purpose of AI in the product
  - Certification, deployment method, how you can manage access
  - Data storage, processing location
  - Scoped usage and intended users
  - Models, training data and level of human interaction
  - Security, guardrails and best practices...
- **Who Should Use Them:**
  - Analysts, developers, and decision-makers working with AI tools
- **Key Benefit:**
  - Supports transparency for your informed use of AI



**Explore the cards:**  
[trust.arcgis.com/en/trusted-ai](https://trust.arcgis.com/en/trusted-ai)

# ArcGIS Is Being Enhanced with AI

Integrating the Power of GIS and AI across organizations and workflows





Welcome!

Ask a question to filter and explore the data on the map.

Return the total number of inv

Show springs used for farmi

Where is the spring with the h

Ask a question

### Welcome Panama Water Sources Map



This application lets you explore information about water sources in Panama using natural language:

- Filter data by attributes to locate specific categories or numeric values.
- Spatially filter data by another map layer or specific address to find events in an area.
- Extract statistics from numeric and categorical fields in the data.

Explore with your own question, or ask any available sample questions to get you started.

☐ Don't show this again

Enter





# What is an AI agent?

- An AI agent is a software component that, given a task, can make decisions on its own to solve it, using a pre-defined set of business rules, tools and data.
- At their core, AI agents use Large Language Models to reason and use the tools & data at their disposal within the constraints of rules provided.
- Geospatial AI agents are a type of agent that has been specifically configured to handle geospatial tasks. These agents understand the foundational principles of geography, GIS tools and GIS data.

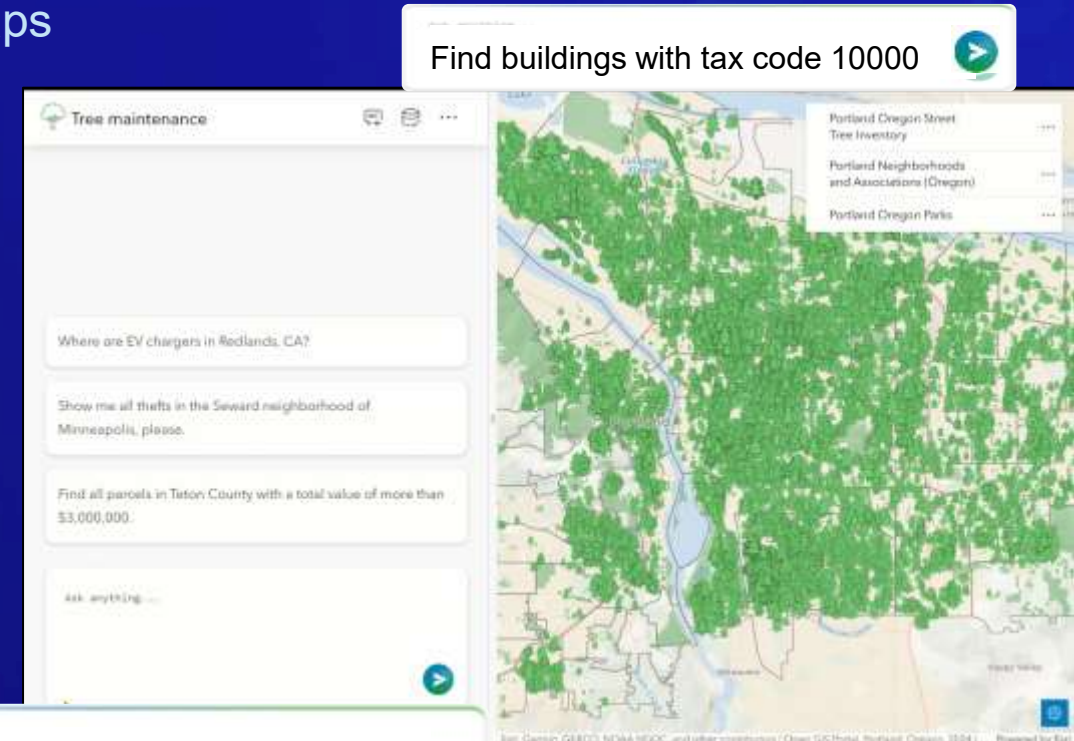
# Geospatial Agents and NLGIS

- The user experience of GIS has evolved over time, from command line to graphical user interfaces in desktops, browsers and mobile devices.
- With the introduction of Large Language Models, new user experiences based on natural language interactions are possible.
- Natural Language GIS applications allow end users to navigate and explore maps using natural language prompts, simplifying access to geospatial information and capabilities.
- Geospatial AI agents power Natural Language GIS applications.

# Data Explorer Instant App template (beta coming in Q1 2026)

Create a modern, natural language experience for your maps

- Configurable Instant App template
- Enables natural language for:
  - Map exploration
  - Essential geographic analysis and filtering
  - Data summarization
- Share apps within your organization, or publicly
- [Request access to private beta](#)



Identify all parcels with tax values that fall below the average value.

How many burglaries occurred in Norfolk District in 2022?



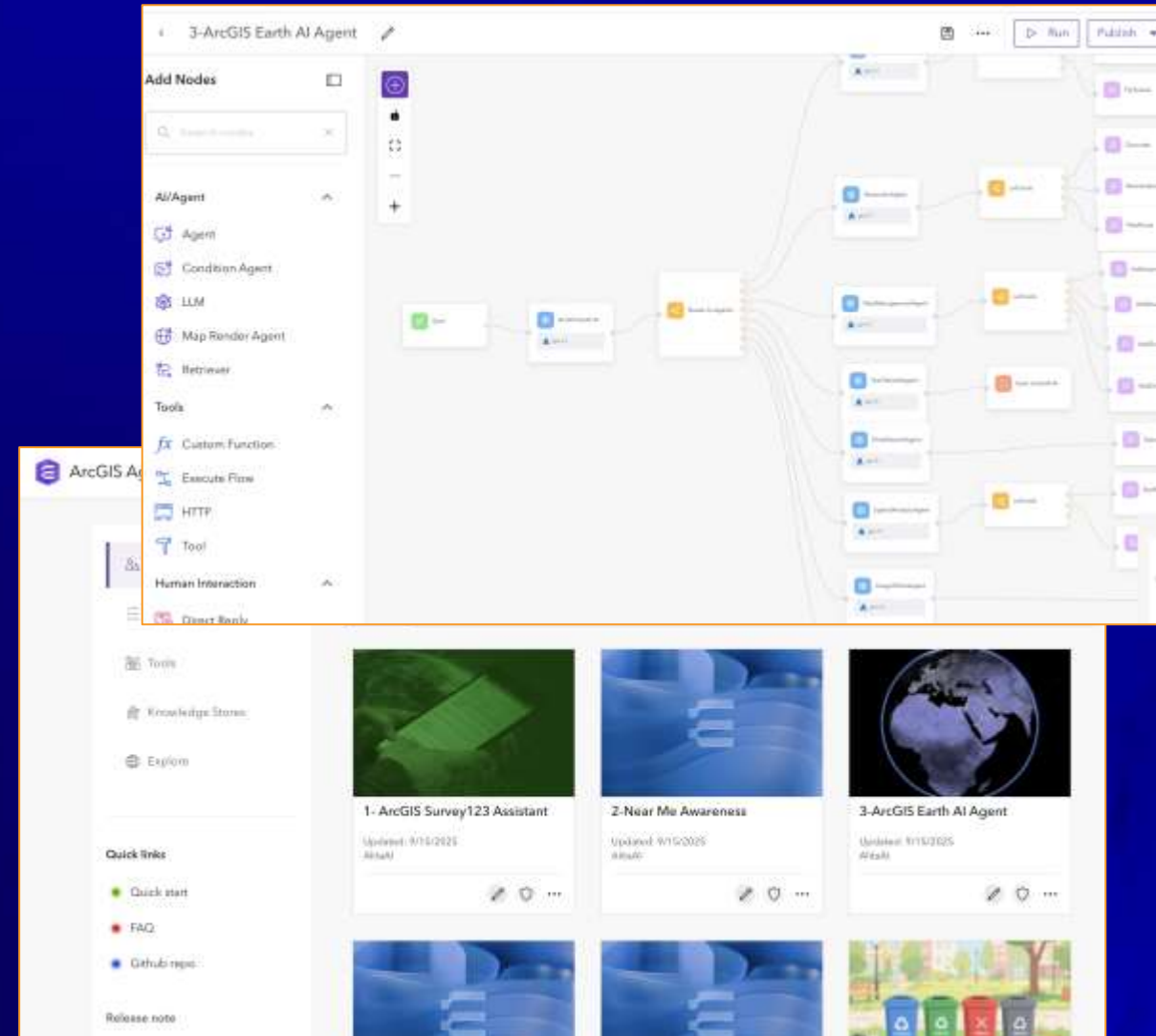
# Geospatial Agents and Agentic ecosystems

- In an agentic ecosystem, agents can collaborate with each other, with and without the help of a human.
- Standard protocols like A2A enable agent collaboration.
- Just like we share GIS web services today, via REST and OGC protocols, we will share Geospatial Agents in the future, through A2A.
- This opens the doors bring geospatial capabilities into any AI system and enable agent-based automation

# ArcGIS Agent Builder (beta 2026)

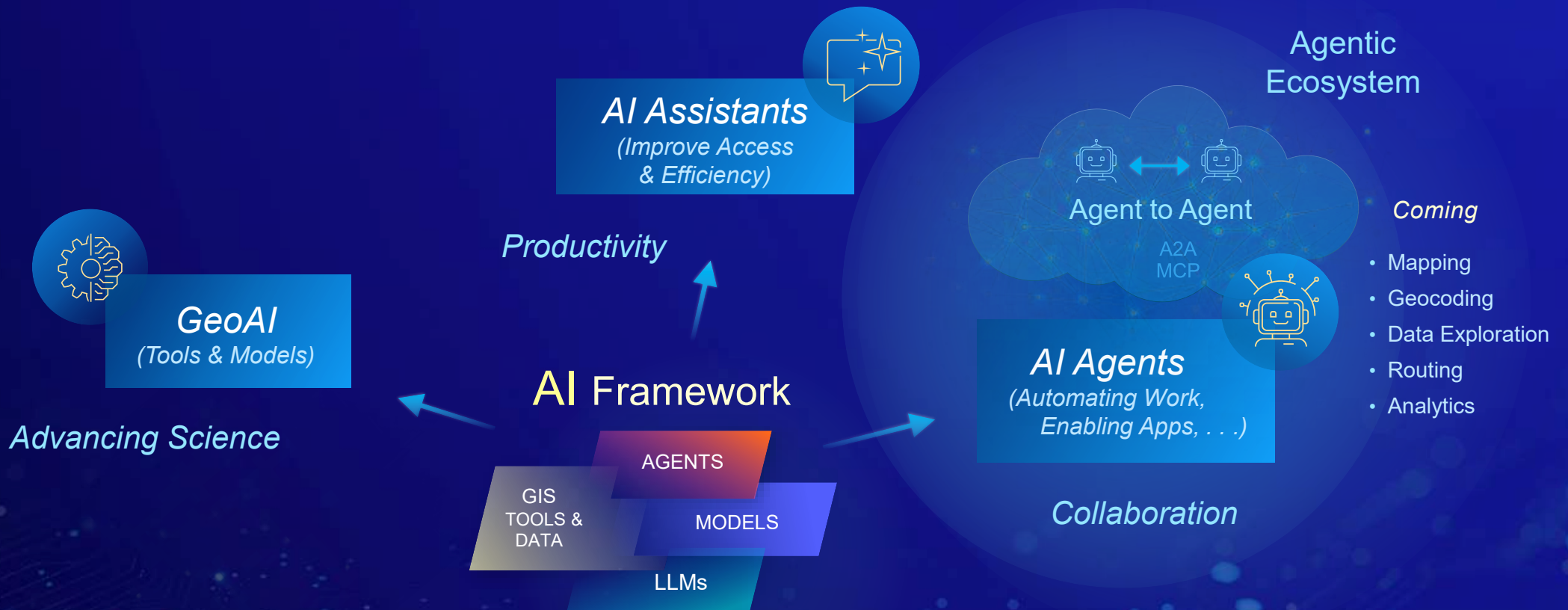
Design, configure and deploy geospatial agents

- A no-code environment for building geospatial AI agents.
- Create customized orchestration flows designed for AI agents, enhanced with ArcGIS capabilities.
- Full lifecycle of AI Agents: Design, configuration, and optimization.
- Deploy agents for use within ArcGIS or third-party agentic apps (via A2A)



# ArcGIS is a Geospatial AI Platform

Integrating the Power of GIS and AI across organizations and workflows





The background is a solid blue color with a decorative header at the top. The header features several overlapping, wavy, horizontal lines in varying shades of blue, creating a sense of motion or a stylized horizon. The main body of the slide is a uniform, deep blue.

**Q&A**



Copyright © 2024 Esri. All rights reserved.